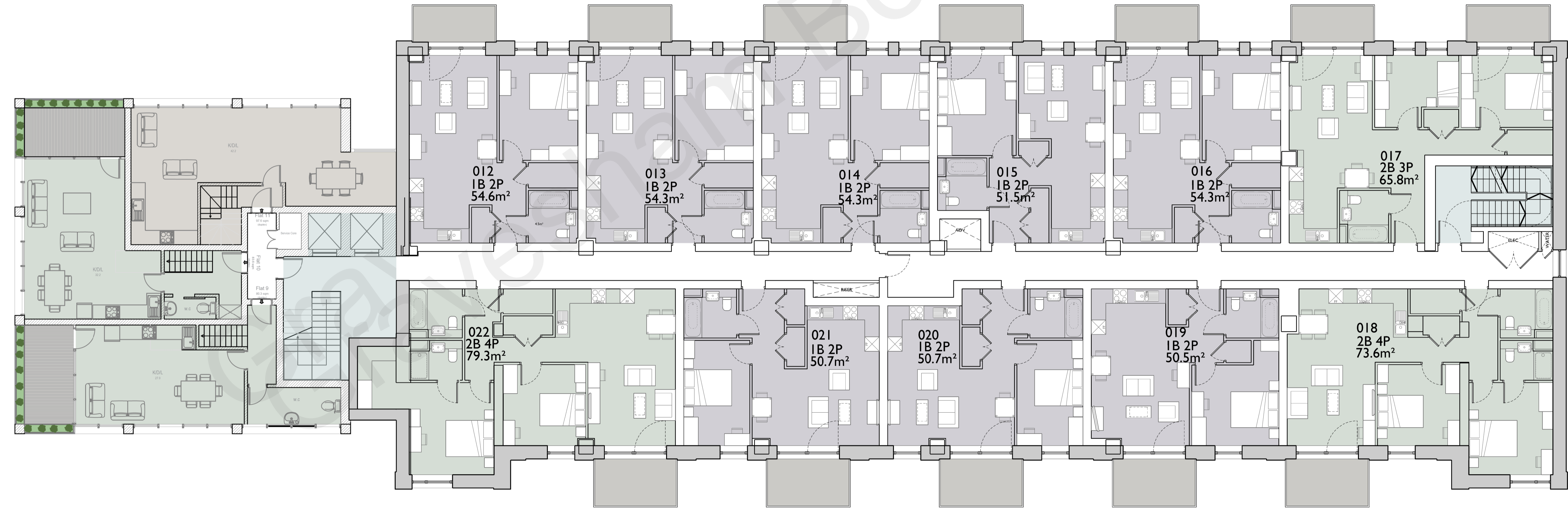


Fourth Floor



Fifth Floor

- Notes:
- Do not scale from this drawing; work to figured dimensions only.
 - All information is to be checked on site for accuracy and fit.
 - Report any discrepancies and omissions to RMA Architects.

- Where RMA services on a project do not include for site inspections and works surveys, RMA do not warrant that 'as built' issue drawings are a complete and accurate record of what has been constructed.
- Unless notified specifically by the responsible party, changes made on site to RMA design information has not been incorporated in this drawing.

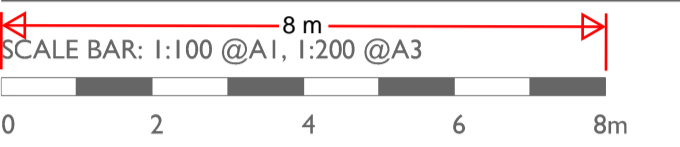


Diagram Key

A	19.08.22	Design freeze	KR	LM
-	29.07.22	First issued	KR	LM
Rev	Date	Description	By	Chkd

RM_A

320C Highgate Studios
53-79 Highgate Road, London, NW5 1TL
020 7284 1414, rmaarchitects.co.uk



Project
Former Gravesend & North Kent
Hospital (M Block),
Bath Street, Gravesend, DA11 0DG
RMA Job Reference: 2244

Client
STRAWBERRY STAR

Scale	Date	By	Checked
1:100	JULY 22	AC	LD

Drawing Title
**FOURTH & FIFTH
FLOOR PLAN
BLOCK M S73
BLOCK T CONSENTED**

Purpose of Issue
PLANNING

File Identifier
2244_0924

Status	Revision
D	A