

65	10.13	Possible Special Areas of Conservation (pSAC)	0	0	0	0	0
66	10.14	Potential Special Protection Areas (pSPA)	0	0	0	0	0
66	10.15	Nitrate Sensitive Areas	0	0	0	0	0
<a href="#">66</a> >	<a href="#">10.16</a> >	<a href="#">Nitrate Vulnerable Zones</a> >	1	0	0	2	3
<a href="#">67</a> >	<a href="#">10.17</a> >	<a href="#">SSSI Impact Risk Zones</a> >	1	-	-	-	-
68	10.18	SSSI Units	0	0	0	0	0
Page	Section	<a href="#">Visual and cultural designations</a> >	On site	0-50m	50-250m	250-500m	500-2000m
69	11.1	World Heritage Sites	0	0	0	-	-
<a href="#">70</a> >	<a href="#">11.2</a> >	<a href="#">Area of Outstanding Natural Beauty</a> >	0	0	1	-	-
70	11.3	National Parks	0	0	0	-	-
<a href="#">70</a> >	<a href="#">11.4</a> >	<a href="#">Listed Buildings</a> >	0	0	2	-	-
<a href="#">71</a> >	<a href="#">11.5</a> >	<a href="#">Conservation Areas</a> >	1	0	0	-	-
71	11.6	Scheduled Ancient Monuments	0	0	0	-	-
71	11.7	Registered Parks and Gardens	0	0	0	-	-
Page	Section	<a href="#">Agricultural designations</a> >	On site	0-50m	50-250m	250-500m	500-2000m
<a href="#">72</a> >	<a href="#">12.1</a> >	<a href="#">Agricultural Land Classification</a> >	Grade 3 (within 250m)				
73	12.2	Open Access Land	0	0	0	-	-
73	12.3	Tree Felling Licences	0	0	0	-	-
73	12.4	Environmental Stewardship Schemes	0	0	0	-	-
<a href="#">74</a> >	<a href="#">12.5</a> >	<a href="#">Countryside Stewardship Schemes</a> >	1	1	1	-	-
Page	Section	<a href="#">Habitat designations</a> >	On site	0-50m	50-250m	250-500m	500-2000m
<a href="#">75</a> >	<a href="#">13.1</a> >	<a href="#">Priority Habitat Inventory</a> >	0	6	9	-	-
76	13.2	Habitat Networks	0	0	0	-	-
76	13.3	Open Mosaic Habitat	0	0	0	-	-
77	13.4	Limestone Pavement Orders	0	0	0	-	-
Page	Section	<a href="#">Geology 1:10,000 scale</a> >	On site	0-50m	50-250m	250-500m	500-2000m
<a href="#">78</a> >	<a href="#">14.1</a> >	<a href="#">10k Availability</a> >	Identified (within 500m)				
79	14.2	Artificial and made ground (10k)	0	0	0	0	-
<a href="#">80</a> >	<a href="#">14.3</a> >	<a href="#">Superficial geology (10k)</a> >	1	0	1	1	-

81	14.4	Landslip (10k)	0	0	0	0	-
<a href="#">82 &gt;</a>	<a href="#">14.5 &gt;</a>	<a href="#">Bedrock geology (10k) &gt;</a>	2	0	2	0	-
83	14.6	Bedrock faults and other linear features (10k)	0	0	0	0	-
Page	Section	<a href="#">Geology 1:50,000 scale &gt;</a>	On site	0-50m	50-250m	250-500m	500-2000m
<a href="#">84 &gt;</a>	<a href="#">15.1 &gt;</a>	<a href="#">50k Availability &gt;</a>	Identified (within 500m)				
85	15.2	Artificial and made ground (50k)	0	0	0	0	-
85	15.3	Artificial ground permeability (50k)	0	0	-	-	-
<a href="#">86 &gt;</a>	<a href="#">15.4 &gt;</a>	<a href="#">Superficial geology (50k) &gt;</a>	1	0	0	1	-
<a href="#">87 &gt;</a>	<a href="#">15.5 &gt;</a>	<a href="#">Superficial permeability (50k) &gt;</a>	Identified (within 50m)				
87	15.6	Landslip (50k)	0	0	0	0	-
87	15.7	Landslip permeability (50k)	None (within 50m)				
<a href="#">88 &gt;</a>	<a href="#">15.8 &gt;</a>	<a href="#">Bedrock geology (50k) &gt;</a>	2	0	0	0	-
<a href="#">89 &gt;</a>	<a href="#">15.9 &gt;</a>	<a href="#">Bedrock permeability (50k) &gt;</a>	Identified (within 50m)				
89	15.10	Bedrock faults and other linear features (50k)	0	0	0	0	-
Page	Section	Boreholes	On site	0-50m	50-250m	250-500m	500-2000m
90	16.1	BGS Boreholes	0	0	0	-	-
Page	Section	<a href="#">Natural ground subsidence &gt;</a>					
<a href="#">91 &gt;</a>	<a href="#">17.1 &gt;</a>	<a href="#">Shrink swell clays &gt;</a>	Very low (within 50m)				
<a href="#">92 &gt;</a>	<a href="#">17.2 &gt;</a>	<a href="#">Running sands &gt;</a>	Low (within 50m)				
<a href="#">94 &gt;</a>	<a href="#">17.3 &gt;</a>	<a href="#">Compressible deposits &gt;</a>	Negligible (within 50m)				
<a href="#">95 &gt;</a>	<a href="#">17.4 &gt;</a>	<a href="#">Collapsible deposits &gt;</a>	Very low (within 50m)				
<a href="#">96 &gt;</a>	<a href="#">17.5 &gt;</a>	<a href="#">Landslides &gt;</a>	Very low (within 50m)				
<a href="#">98 &gt;</a>	<a href="#">17.6 &gt;</a>	<a href="#">Ground dissolution of soluble rocks &gt;</a>	High (within 50m)				
Page	Section	<a href="#">Mining and ground workings &gt;</a>	On site	0-50m	50-250m	250-500m	500-2000m
<a href="#">100 &gt;</a>	<a href="#">18.1 &gt;</a>	<a href="#">BritPits &gt;</a>	0	0	0	1	-
<a href="#">101 &gt;</a>	<a href="#">18.2 &gt;</a>	<a href="#">Surface ground workings &gt;</a>	0	0	2	-	-
101	18.3	Underground workings	0	0	0	0	0
101	18.4	Underground mining extents	0	0	0	0	-
102	18.5	Historical Mineral Planning Areas	0	0	0	0	-



<a href="#">102</a> >	<a href="#">18.6</a> >	<a href="#">Non-coal mining</a> >	1	0	1	0	2
103	18.7	JPB mining areas	None (within 0m)				
103	18.8	The Coal Authority non-coal mining	0	0	0	0	-
<a href="#">103</a> >	<a href="#">18.9</a> >	<a href="#">Researched mining</a> >	0	0	1	2	-
103	18.10	Mining record office plans	0	0	0	0	-
104	18.11	BGS mine plans	0	0	0	0	-
104	18.12	Coal mining	None (within 0m)				
104	18.13	Brine areas	None (within 0m)				
104	18.14	Gypsum areas	None (within 0m)				
104	18.15	Tin mining	None (within 0m)				
105	18.16	Clay mining	None (within 0m)				
Page	Section	<a href="#">Ground cavities and sinkholes</a> >	On site	0-50m	50-250m	250-500m	500-2000m
<a href="#">106</a> >	<a href="#">19.1</a> >	<a href="#">Natural cavities</a> >	0	0	1	2	-
<a href="#">107</a> >	<a href="#">19.2</a> >	<a href="#">Mining cavities</a> >	0	0	0	2	1
107	19.3	Reported recent incidents	0	0	0	0	-
108	19.4	Historical incidents	0	0	0	0	-
Page	Section	<a href="#">Radon</a> >					
<a href="#">109</a> >	<a href="#">20.1</a> >	<a href="#">Radon</a> >	Between 1% and 3% (within 0m)				
Page	Section	<a href="#">Soil chemistry</a> >	On site	0-50m	50-250m	250-500m	500-2000m
<a href="#">111</a> >	<a href="#">21.1</a> >	<a href="#">BGS Estimated Background Soil Chemistry</a> >	10	1	-	-	-
112	21.2	BGS Estimated Urban Soil Chemistry	0	0	-	-	-
112	21.3	BGS Measured Urban Soil Chemistry	0	0	-	-	-
Page	Section	<a href="#">Railway infrastructure and projects</a>	On site	0-50m	50-250m	250-500m	500-2000m
113	22.1	Underground railways (London)	0	0	0	-	-
113	22.2	Underground railways (Non-London)	0	0	0	-	-
113	22.3	Railway tunnels	0	0	0	-	-
113	22.4	Historical railway and tunnel features	0	0	0	-	-
113	22.5	Royal Mail tunnels	0	0	0	-	-
114	22.6	Historical railways	0	0	0	-	-

114	22.7	Railways	0	0	0	-	-
114	22.8	Crossrail 2	0	0	0	0	-
114	22.9	HS2	0	0	0	0	-



## Recent aerial photograph



Aerial photography supplied by Getmapping PLC. © Copyright Getmapping PLC 2025. All Rights Reserved.

Capture Date: 31/05/2021

Site Area: 15.82ha



Contact us with any questions at:

[info@groundsure.com](mailto:info@groundsure.com)

01273 257 755

Date: 18 March 2025

## Recent site history - 2018 aerial photograph



Capture Date: 21/10/2018

Site Area: 15.82ha



Contact us with any questions at:

[info@groundsure.com](mailto:info@groundsure.com)

01273 257 755

Date: 18 March 2025



## Recent site history - 2012 aerial photograph



Capture Date: 25/05/2012

Site Area: 15.82ha



Contact us with any questions at:

[info@groundsure.com](mailto:info@groundsure.com)

01273 257 755

Date: 18 March 2025

## Recent site history - 2009 aerial photograph



Capture Date: 23/08/2009

Site Area: 15.82ha



Contact us with any questions at:

[info@groundsure.com](mailto:info@groundsure.com) ↗

01273 257 755

Date: 18 March 2025



## Recent site history - 1999 aerial photograph



Aerial photography supplied by Getmapping PLC. © Copyright Getmapping PLC 2025. All Rights Reserved.

Capture Date: 03/09/1999

Site Area: 15.82ha



Contact us with any questions at:

[info@groundsure.com](mailto:info@groundsure.com)

01273 257 755

Date: 18 March 2025

## 1 Past land use



- Site Outline
- Search buffers in metres (m)
- Historical industrial land uses
- Historical tanks
- Historical energy features
- Historical garages

### 1.1 Historical industrial land uses

Records within 500m

10

Potentially contaminative land use features digitised from historical Ordnance Survey mapping at 1:10,000 and 1:10,560 scale, intelligently grouped into contiguous features. To prevent misrepresentation of the size of historical features at any given time, features are only grouped if they have similar geometries within immediately preceding or succeeding map editions. See section 2 for a breakdown of grouping if required. Grouped and the original un-grouped features can be cross-referenced across sections 1 and 2 using the 'Group ID'.

Features are displayed on the Past land use map on [page 14](#) >

ID	Location	Land use	Dates present	Group ID
1	11m N	Telephone Exchange	1965	2189350



ID	Location	Land use	Dates present	Group ID
4	81m NW	Police Station	1965 - 1973	2243134
6	139m SW	Grave Yard	1867	2165818
7	213m SW	Grave Yard	1965	2165819
B	337m W	Brick Works	1867	2167643
B	362m W	Clay Pits	1867	2200916
B	393m W	Unspecified Kiln	1867	2188721
F	444m N	Smithy	1867	2181248
F	455m NW	Smithy	1895 - 1907	2247914
G	482m N	Unspecified Tank	1907 - 1938	2279843

This data is sourced from Ordnance Survey / Groundsure.

## 1.2 Historical tanks

### Records within 500m

4

Tank features digitised from historical Ordnance Survey mapping at high-detail 1:1,250 and 1:2,500 scale, intelligently grouped into contiguous features. To prevent misrepresentation of the size of historical features at any given time, features are only grouped if they have similar geometries within immediately preceding or succeeding map editions. See section 2 for a breakdown of grouping if required. Grouped and the original ungrouped features can be cross-referenced across sections 1 and 2 using the 'Group ID'.

Features are displayed on the Past land use map on [page 14 >](#)

ID	Location	Land use	Dates present	Group ID
E	437m SW	Tanks	1908 - 1974	409145
E	456m SW	Unspecified Tank	1908 - 1974	404170
G	483m N	Unspecified Tank	1896 - 1908	398122
9	498m N	Unspecified Tank	1939	392612

This data is sourced from Ordnance Survey / Groundsure.





### 1.3 Historical energy features

#### Records within 500m

9

Energy features digitised from historical Ordnance Survey mapping at high-detail 1:1,250 and 1:2,500 scale, intelligently grouped into contiguous features. To prevent misrepresentation of the size of historical features at any given time, features are only grouped if they have similar geometries within immediately preceding or succeeding map editions. See section 2 for a breakdown of grouping if required. Grouped and the original ungrouped features can be cross-referenced across sections 1 and 2 using the 'Group ID'.

Features are displayed on the Past land use map on [page 14 >](#)

ID	Location	Land use	Dates present	Group ID
3	68m N	Electricity Transformer	1974	276975
5	132m W	Electricity Transformer	1974	276976
A	326m N	Electricity Substation	1987	302791
A	326m N	Electricity Transformer	1975	276988
8	332m NW	Electricity Transformer	1974	276978
C	362m SE	Electricity Substation	1991	272389
C	364m SE	Electricity Transformer	1974	276977
G	454m N	Electricity Substation	1987	271645
G	455m N	Electricity Transformer	1975	276986

*This data is sourced from Ordnance Survey / Groundsure.*

### 1.4 Historical petrol stations

#### Records within 500m

0

Petrol stations digitised from historical Ordnance Survey mapping at high-detail 1:1,250 and 1:2,500 scale, intelligently grouped into contiguous features. To prevent misrepresentation of the size of historical features at any given time, features are only grouped if they have similar geometries within immediately preceding or succeeding map editions. See section 2 for a breakdown of grouping if required. Grouped and the original ungrouped features can be cross-referenced across sections 1 and 2 using the 'Group ID'.

*This data is sourced from Ordnance Survey / Groundsure.*





## 1.5 Historical garages

### Records within 500m

**3**

Garages digitised from historical Ordnance Survey mapping at high-detail 1:1,250 and 1:2,500 scale, intelligently grouped into contiguous features. To prevent misrepresentation of the size of historical features at any given time, features are only grouped if they have similar geometries within immediately preceding or succeeding map editions. See section 2 for a breakdown of grouping if required. Grouped and the original ungrouped features can be cross-referenced across sections 1 and 2 using the 'Group ID'.

Features are displayed on the Past land use map on [page 14 >](#)

ID	Location	Land use	Dates present	Group ID
2	30m NW	Garage	1962 - 1974	82666
D	436m S	Garage	1962	93000
D	437m S	Garage	1967 - 1991	92773

*This data is sourced from Ordnance Survey / Groundsure.*

## 1.6 Historical military land

### Records within 500m

**0**

Areas of military land digitised from multiple sources including the National Archives, local records, MOD records and verified other sources, intelligently grouped into contiguous features.

*This data is sourced from Ordnance Survey / Groundsure / other sources.*



## 2 Past land use - un-grouped



- Site Outline
- Search buffers in metres (m)
- Historical industrial land uses
- Historical tanks
- Historical energy features
- Historical garages

### 2.1 Historical industrial land uses

Records within 500m

14

Potentially contaminative land use features digitised from historical Ordnance Survey mapping at 1:10,000 and 10,560 scale. Any records shown are available intelligently grouped in section 1. Grouped and the original un-grouped features can be cross-referenced across sections 1 and 2 using the 'Group ID'.

Features are displayed on the Past land use - un-grouped map on [page 18](#) >

ID	Location	Land Use	Date	Group ID
1	11m N	Telephone Exchange	1965	2189350
B	81m NW	Police Station	1973	2243134
B	81m NW	Police Station	1965	2243134



ID	Location	Land Use	Date	Group ID
4	139m SW	Grave Yard	1867	2165818
5	213m SW	Grave Yard	1965	2165819
D	337m W	Brick Works	1867	2167643
D	362m W	Clay Pits	1867	2200916
D	393m W	Unspecified Kiln	1867	2188721
H	444m N	Smithy	1867	2181248
H	455m NW	Smithy	1907	2247914
H	456m NW	Smithy	1895	2247914
I	482m N	Unspecified Tank	1938	2279843
I	484m N	Unspecified Tank	1931	2279843
I	484m N	Unspecified Tank	1907	2279843

*This data is sourced from Ordnance Survey / Groundsure.*

## 2.2 Historical tanks

### Records within 500m

**11**

Tank features digitised from historical Ordnance Survey mapping at high-detail 1:1,250 and 1:2,500 scale. Any records shown are available intelligently grouped in section 1. Grouped and the original un-grouped features can be cross-referenced across sections 1 and 2 using the 'Group ID'.

Features are displayed on the Past land use - un-grouped map on [page 18](#) >

ID	Location	Land Use	Date	Group ID
G	437m SW	Tanks	1962	409145
G	437m SW	Tanks	1974	409145
G	439m SW	Tanks	1908	409145
G	439m SW	Tanks	1936	409145
G	456m SW	Unspecified Tank	1962	404170
G	456m SW	Unspecified Tank	1974	404170
G	458m SW	Unspecified Tank	1908	404170
G	458m SW	Unspecified Tank	1936	404170
I	483m N	Unspecified Tank	1896	398122



ID	Location	Land Use	Date	Group ID
I	483m N	Unspecified Tank	1908	398122
7	498m N	Unspecified Tank	1939	392612

This data is sourced from Ordnance Survey / Groundsure.

## 2.3 Historical energy features

Records within 500m

10

Energy features digitised from historical Ordnance Survey mapping at high-detail 1:1,250 and 1:2,500 scale. Any records shown are available intelligently grouped in section 1. Grouped and the original un-grouped features can be cross-referenced across sections 1 and 2 using the 'Group ID'.

Features are displayed on the Past land use - un-grouped map on [page 18 >](#)

ID	Location	Land Use	Date	Group ID
2	68m N	Electricity Transformer	1974	276975
3	132m W	Electricity Transformer	1974	276976
C	326m N	Electricity Substation	1987	302791
C	326m N	Electricity Substation	1987	302791
C	326m N	Electricity Transformer	1975	276988
6	332m NW	Electricity Transformer	1974	276978
E	362m SE	Electricity Substation	1991	272389
E	364m SE	Electricity Transformer	1974	276977
I	454m N	Electricity Substation	1987	271645
I	455m N	Electricity Transformer	1975	276986

This data is sourced from Ordnance Survey / Groundsure.

## 2.4 Historical petrol stations

Records within 500m

0

Petrol stations digitised from historical Ordnance Survey mapping at high-detail 1:1,250 and 1:2,500 scale. Any records shown are available intelligently grouped in section 1. Grouped and the original un-grouped features can be cross-referenced across sections 1 and 2 using the 'Group ID'.

This data is sourced from Ordnance Survey / Groundsure.



## 2.5 Historical garages

### Records within 500m

5

Garages digitised from historical Ordnance Survey mapping at high-detail 1:1,250 and 1:2,500 scale. Any records shown are available intelligently grouped in section 1. Grouped and the original un-grouped features can be cross-referenced across sections 1 and 2 using the 'Group ID'.

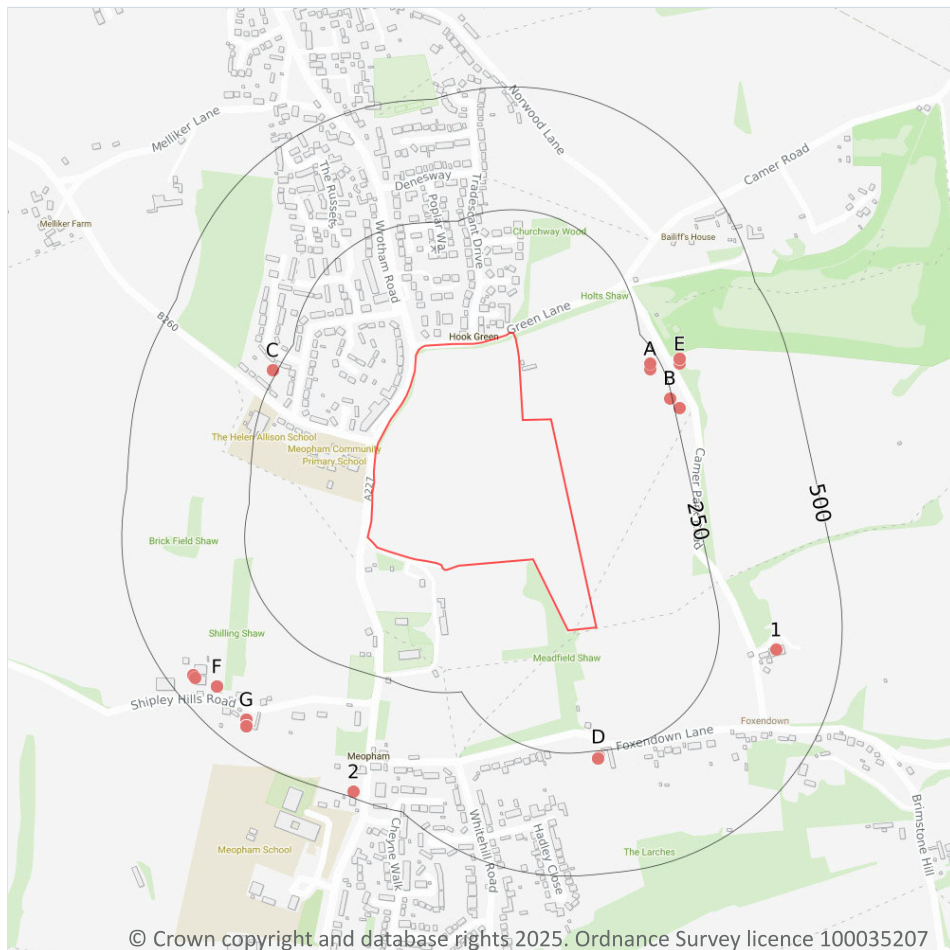
Features are displayed on the Past land use - un-grouped map on [page 18](#) >

ID	Location	Land Use	Date	Group ID
A	30m NW	Garage	1962	82666
A	30m NW	Garage	1974	82666
F	436m S	Garage	1962	93000
F	437m S	Garage	1967	92773
F	437m S	Garage	1991	92773

*This data is sourced from Ordnance Survey / Groundsure.*



## 3 Waste and landfill



- Site Outline
- Search buffers in metres (m)
- Waste exemptions

### 3.1 Active or recent landfill

Records within 500m

0

Active or recently closed landfill sites under Environment Agency/Natural Resources Wales regulation.

*This data is sourced from the Environment Agency and Natural Resources Wales.*

### 3.2 Historical landfill (BGS records)

Records within 500m

0

Landfill sites identified on a survey carried out on behalf of the DoE in 1973. These sites may have been closed or operational at this time.

*This data is sourced from the British Geological Survey.*



### 3.3 Historical landfill (LA/mapping records)

**Records within 500m****0**

Landfill sites identified from Local Authority records and high detail historical mapping.

*This data is sourced from the Ordnance Survey/Groundsure and Local Authority records.*

### 3.4 Historical landfill (EA/NRW records)

**Records within 500m****0**

Known historical (closed) landfill sites (e.g. sites where there is no PPC permit or waste management licence currently in force). This includes sites that existed before the waste licensing regime and sites that have been licensed in the past but where a licence has been revoked, ceased to exist or surrendered and a certificate of completion has been issued.

*This data is sourced from the Environment Agency and Natural Resources Wales.*

### 3.5 Historical waste sites

**Records within 500m****0**

Waste site records derived from Local Authority planning records and high detail historical mapping.

*This data is sourced from Ordnance Survey/Groundsure and Local Authority records.*

### 3.6 Licensed waste sites

**Records within 500m****0**

Active or recently closed waste sites under Environment Agency/Natural Resources Wales regulation.

*This data is sourced from the Environment Agency and Natural Resources Wales.*

### 3.7 Waste exemptions

**Records within 500m****106**

Activities involving the storage, treatment, use or disposal of waste that are exempt from needing a permit. Exemptions have specific limits and conditions that must be adhered to.

Features are displayed on the Waste and landfill map on [page 22 >](#)

ID	Location	Site	Reference	Category	Sub-Category	Description
A	225m NE	-	WEX294697	Storing waste exemption	On a farm	Storage of sludge



ID	Location	Site	Reference	Category	Sub-Category	Description
A	230m NE	-	WEX227455	Storing waste exemption	On a farm	Storage of sludge
B	244m E	-	WEX080438	Storing waste exemption	On a farm	Storage of sludge
C	259m NW	-	WEX411487	Disposing of waste exemption	Not on a farm	Burning waste in the open
C	259m NW	-	WEX282173	Disposing of waste exemption	Not on a farm	Burning waste in the open
B	260m E	Clements Reach Farm Shipleigh Hills Road Gravesend Kent Da13 0ad	EPR/HE5183W X/A001	Storing waste exemption	Non-agricultural waste only	Storage of sludge
D	264m SE	Foxendown Farm Foxendown Lane Gravesend Kent Da13 0ae	EPR/CF0033HP /A001	Disposing of waste exemption	Both agricultural and non-agricultural waste	Burning waste in the open
D	264m SE	Foxendown Farm Foxendown Lane Gravesend Kent Da13 0ae	EPR/CF0033HP /A001	Using waste exemption	Both agricultural and non-agricultural waste	Use of mulch
D	264m SE	Foxendown Farm Foxendown Lane Gravesend Kent Da13 0ae	EPR/CF0033HP /A001	Using waste exemption	Both agricultural and non-agricultural waste	Use of waste in construction
D	264m SE	Foxendown Farm Foxendown Lane Gravesend Kent Da13 0ae	EPR/CF0033HP /A001	Using waste exemption	Both agricultural and non-agricultural waste	Use of waste for a specified purpose
D	266m SE	Foxendown Farm, Foxendown Lane, Meopham, Gravesend, Da13 0ae	WEX331814	Using waste exemption	On a farm	Spreading waste on agricultural land to confer benefit
D	266m SE	Foxendown Farm, Foxendown Lane, Meopham, Gravesend, Da13 0ae	WEX331814	Using waste exemption	On a farm	Use of mulch





ID	Location	Site	Reference	Category	Sub-Category	Description
D	266m SE	Foxendown Farm, Foxendown Lane, Meopham, Gravesend, Da13 0ae	WEX331814	Disposing of waste exemption	On a farm	Burning waste in the open
D	266m SE	Foxendown Farm, Foxendown Lane, Meopham, Gravesend, Da13 0ae	WEX331814	Using waste exemption	On a farm	Use of waste in construction
D	266m SE	Foxendown Farm, Foxendown Lane, Meopham, Gravesend, Da13 0ae	WEX331814	Using waste exemption	On a farm	Spreading of plant matter to confer benefit
D	266m SE	Foxendown Farm, Foxendown Lane, Meopham, Gravesend, Da13 0ae	WEX207125	Using waste exemption	On a farm	Use of waste in construction
D	266m SE	Foxendown Farm, Foxendown Lane, Meopham, Gravesend, Da13 0ae	WEX207125	Using waste exemption	On a farm	Spreading of plant matter to confer benefit
D	266m SE	Foxendown Farm, Foxendown Lane, Meopham, Gravesend, Da13 0ae	WEX054944	Disposing of waste exemption	On a farm	Burning waste in the open
D	266m SE	Foxendown Farm, Foxendown Lane, Meopham, Gravesend, Da13 0ae	WEX054944	Using waste exemption	On a farm	Use of mulch
D	266m SE	Foxendown Farm, Foxendown Lane, Meopham, Gravesend, Da13 0ae	WEX207125	Disposing of waste exemption	On a farm	Burning waste in the open
D	266m SE	Foxendown Farm, Foxendown Lane, Meopham, Gravesend, Da13 0ae	WEX207125	Using waste exemption	On a farm	Use of mulch
D	266m SE	Foxendown Farm, Foxendown Lane, Meopham, Gravesend, Da13 0ae	WEX207125	Using waste exemption	On a farm	Spreading waste on agricultural land to confer benefit



ID	Location	Site	Reference	Category	Sub-Category	Description
D	266m SE	Foxendown Farm, Foxendown Lane, Meopham, Gravesend, Da13 0ae	WEX054944	Using waste exemption	On a farm	Use of waste in construction
D	266m SE	Foxendown Farm, Foxendown Lane, Meopham, Gravesend, Da13 0ae	WEX054944	Using waste exemption	On a farm	Spreading of plant matter to confer benefit
D	266m SE	Foxendown Farm, Foxendown Lane, Meopham, Gravesend, Da13 0ae	WEX054944	Using waste exemption	On a farm	Use of waste for a specified purpose
E	284m NE	-	WEX294695	Storing waste exemption	On a farm	Storage of sludge
E	288m NE	-	WEX167997	Storing waste exemption	On a farm	Storage of sludge
E	288m NE	Clements Reach Farm Shipleigh Hills Road Gravesend Kent Da13 0ad	EPR/HE5283W K/A001	Storing waste exemption	Non- agricultural waste only	Storage of sludge
E	288m NE	Clements Reach Farm Shipleigh Hills Road Gravesend Kent Da13 0ad	EPR/ZE5342NZ /A001	Storing waste exemption	Non- agricultural waste only	Storage of sludge
1	368m SE	Ashmere Farm, Camer Park Road, Meopham, Gravesend, Da13 0al	WEX316389	Using waste exemption	On a farm	Use of waste in construction
F	433m SW	Clements Reach Farm, Shipleigh Hills Road, Meopham, Gravesend, Da13 0ad	WEX309929	Storing waste exemption	On a farm	Storage of sludge
F	433m SW	Clements Reach Farm, Shipleigh Hills Road, Meopham, Gravesend, Da13 0ad	WEX309929	Storing waste exemption	On a farm	Storage of waste in a secure place
F	433m SW	Clements Reach Farm, Shipleigh Hills Road, Meopham, Gravesend, Da13 0ad	WEX309929	Storing waste exemption	On a farm	Storage of waste in secure containers
F	433m SW	Clements Reach Farm, Shipleigh Hills Road, Meopham, Gravesend, Da13 0ad	WEX309929	Disposing of waste exemption	On a farm	Deposit of waste from dredging of inland waters



ID	Location	Site	Reference	Category	Sub-Category	Description
F	433m SW	Clements Reach Farm, Shipley Hills Road, Meopham, Gravesend, Da13 0ad	WEX309929	Treating waste exemption	On a farm	Treatment of waste wood and waste plant matter by chipping, shredding, cutting or pulverising
F	433m SW	Clements Reach Farm, Shipley Hills Road, Meopham, Gravesend, Da13 0ad	WEX309929	Treating waste exemption	On a farm	Preparatory treatments (baling, sorting, shredding etc)
F	433m SW	Clements Reach Farm, Shipley Hills Road, Meopham, Gravesend, Da13 0ad	WEX309929	Treating waste exemption	On a farm	Cleaning, washing, spraying or coating relevant waste
F	433m SW	Clements Reach Farm, Shipley Hills Road, Meopham, Gravesend, Da13 0ad	WEX309929	Using waste exemption	On a farm	Spreading of plant matter to confer benefit
F	433m SW	Clements Reach Farm, Shipley Hills Road, Meopham, Gravesend, Da13 0ad	WEX309929	Using waste exemption	On a farm	Use of waste for a specified purpose
F	433m SW	Clements Reach Farm, Shipley Hills Road, Meopham, Gravesend, Da13 0ad	WEX309929	Using waste exemption	On a farm	Use of waste in construction
F	433m SW	Clements Reach Farm, Shipley Hills Road, Meopham, Gravesend, Da13 0ad	WEX309929	Disposing of waste exemption	On a farm	Burning waste in the open
F	433m SW	Clements Reach Farm, Shipley Hills Road, Meopham, Gravesend, Da13 0ad	WEX309929	Disposing of waste exemption	On a farm	Deposit of agricultural waste consisting of plant tissue under a Plant Health notice
F	433m SW	Clements Reach Farm, Shipley Hills Road, Meopham, Gravesend, Da13 0ad	WEX309929	Treating waste exemption	On a farm	Recovery of scrap metal
F	433m SW	Clements Reach Farm, Shipley Hills Road, Meopham, Gravesend, Da13 0ad	WEX309929	Using waste exemption	On a farm	Use of mulch



ID	Location	Site	Reference	Category	Sub-Category	Description
F	433m SW	Clements Reach Farm, Shipley Hills Road, Meopham, Gravesend, Da13 0ad	WEX309929	Using waste exemption	On a farm	Spreading waste on agricultural land to confer benefit
F	433m SW	Clements Reach Farm, Shipley Hills Road, Meopham, Gravesend, Da13 0ad	WEX179235	Treating waste exemption	On a farm	Cleaning, washing, spraying or coating relevant waste
F	433m SW	Clements Reach Farm, Shipley Hills Road, Meopham, Gravesend, Da13 0ad	WEX179235	Using waste exemption	On a farm	Use of waste in construction
F	433m SW	Clements Reach Farm, Shipley Hills Road, Meopham, Gravesend, Da13 0ad	WEX179235	Using waste exemption	On a farm	Spreading of plant matter to confer benefit
F	433m SW	Clements Reach Farm, Shipley Hills Road, Meopham, Gravesend, Da13 0ad	WEX179235	Storing waste exemption	On a farm	Storage of waste in a secure place
F	433m SW	Clements Reach Farm, Shipley Hills Road, Meopham, Gravesend, Da13 0ad	WEX179235	Using waste exemption	On a farm	Use of waste for a specified purpose
F	433m SW	Clements Reach Farm, Shipley Hills Road, Meopham, Gravesend, Da13 0ad	WEX179235	Treating waste exemption	On a farm	Preparatory treatments (baling, sorting, shredding etc)
F	433m SW	Clements Reach Farm, Shipley Hills Road, Meopham, Gravesend, Da13 0ad	WEX179235	Treating waste exemption	On a farm	Treatment of waste wood and waste plant matter by chipping, shredding, cutting or pulverising
F	433m SW	Clements Reach Farm, Shipley Hills Road, Meopham, Gravesend, Da13 0ad	WEX179235	Storing waste exemption	On a farm	Storage of waste in secure containers
F	433m SW	Clements Reach Farm, Shipley Hills Road, Meopham, Gravesend, Da13 0ad	WEX179235	Disposing of waste exemption	On a farm	Deposit of waste from dredging of inland waters



ID	Location	Site	Reference	Category	Sub-Category	Description
F	433m SW	Clements Reach Farm, Shipleigh Hills Road, Meopham, Gravesend, Da13 0ad	WEX179235	Storing waste exemption	On a farm	Storage of sludge
F	433m SW	Clements Reach Farm, Shipleigh Hills Road, Meopham, Gravesend, Da13 0ad	WEX179235	Using waste exemption	On a farm	Spreading waste on agricultural land to confer benefit
F	433m SW	Clements Reach Farm, Shipleigh Hills Road, Meopham, Gravesend, Da13 0ad	WEX179235	Treating waste exemption	On a farm	Recovery of scrap metal
F	433m SW	Clements Reach Farm, Shipleigh Hills Road, Meopham, Gravesend, Da13 0ad	WEX179235	Disposing of waste exemption	On a farm	Burning waste in the open
F	433m SW	Clements Reach Farm, Shipleigh Hills Road, Meopham, Gravesend, Da13 0ad	WEX179235	Using waste exemption	On a farm	Use of mulch
F	433m SW	Clements Reach Farm, Shipleigh Hills Road, Meopham, Gravesend, Da13 0ad	WEX179235	Disposing of waste exemption	On a farm	Deposit of agricultural waste consisting of plant tissue under a Plant Health notice
F	433m SW	Clements Reach Farm, Shipleigh Hills Road, Meopham, Gravesend, Da13 0ad	WEX017990	Disposing of waste exemption	On a farm	Deposit of waste from dredging of inland waters
F	433m SW	Clements Reach Farm, Shipleigh Hills Road, Meopham, Gravesend, Da13 0ad	WEX017990	Using waste exemption	On a farm	Use of waste for a specified purpose
F	433m SW	Clements Reach Farm, Shipleigh Hills Road, Meopham, Gravesend, Da13 0ad	WEX017990	Storing waste exemption	On a farm	Storage of waste in secure containers
F	433m SW	Clements Reach Farm, Shipleigh Hills Road, Meopham, Gravesend, Da13 0ad	WEX017990	Storing waste exemption	On a farm	Storage of waste in a secure place



ID	Location	Site	Reference	Category	Sub-Category	Description
F	433m SW	Clements Reach Farm, Shipley Hills Road, Meopham, Gravesend, Da13 0ad	WEX017990	Treating waste exemption	On a farm	Cleaning, washing, spraying or coating relevant waste
F	433m SW	Clements Reach Farm, Shipley Hills Road, Meopham, Gravesend, Da13 0ad	WEX017990	Treating waste exemption	On a farm	Preparatory treatments (baling, sorting, shredding etc)
F	433m SW	Clements Reach Farm, Shipley Hills Road, Meopham, Gravesend, Da13 0ad	WEX017990	Treating waste exemption	On a farm	Treatment of waste wood and waste plant matter by chipping, shredding, cutting or pulverising
F	433m SW	Clements Reach Farm, Shipley Hills Road, Meopham, Gravesend, Da13 0ad	WEX017990	Using waste exemption	On a farm	Use of waste in construction
F	433m SW	Clements Reach Farm, Shipley Hills Road, Meopham, Gravesend, Da13 0ad	WEX017990	Using waste exemption	On a farm	Spreading of plant matter to confer benefit
F	433m SW	Clements Reach Farm, Shipley Hills Road, Meopham, Gravesend, Da13 0ad	WEX017990	Disposing of waste exemption	On a farm	Deposit of agricultural waste consisting of plant tissue under a Plant Health notice
F	433m SW	Clements Reach Farm, Shipley Hills Road, Meopham, Gravesend, Da13 0ad	WEX017990	Disposing of waste exemption	On a farm	Burning waste in the open
F	433m SW	Clements Reach Farm, Shipley Hills Road, Meopham, Gravesend, Da13 0ad	WEX017990	Using waste exemption	On a farm	Spreading waste on agricultural land to confer benefit
G	441m SW	Clements Reach, Shipley Hills Road, Meopham, Gravesend, Da13 0ad	WEX311615	Treating waste exemption	On a farm	Treatment of waste wood and waste plant matter by chipping, shredding, cutting or pulverising
G	441m SW	Clements Reach, Shipley Hills Road, Meopham, Gravesend, Da13 0ad	WEX311615	Using waste exemption	On a farm	Use of waste in construction
G	441m SW	Clements Reach, Shipley Hills Road, Meopham, Gravesend, Da13 0ad	WEX311615	Using waste exemption	On a farm	Spreading waste on agricultural land to confer benefit



ID	Location	Site	Reference	Category	Sub-Category	Description
G	441m SW	Clements Reach, Shipley Hills Road, Meopham, Gravesend, Da13 0ad	WEX311615	Disposing of waste exemption	On a farm	Depositing samples of waste for the purposes of testing or analysing them
G	441m SW	Clements Reach, Shipley Hills Road, Meopham, Gravesend, Da13 0ad	WEX311615	Disposing of waste exemption	On a farm	Burning waste in the open
G	441m SW	Clements Reach, Shipley Hills Road, Meopham, Gravesend, Da13 0ad	WEX180489	Treating waste exemption	On a farm	Treatment of waste wood and waste plant matter by chipping, shredding, cutting or pulverising
G	441m SW	Clements Reach, Shipley Hills Road, Meopham, Gravesend, Da13 0ad	WEX180489	Using waste exemption	On a farm	Use of waste in construction
G	441m SW	Clements Reach, Shipley Hills Road, Meopham, Gravesend, Da13 0ad	WEX180489	Disposing of waste exemption	On a farm	Burning waste in the open
G	441m SW	Clements Reach, Shipley Hills Road, Meopham, Gravesend, Da13 0ad	WEX180489	Using waste exemption	On a farm	Spreading waste on agricultural land to confer benefit
G	441m SW	Clements Reach, Shipley Hills Road, Meopham, Gravesend, Da13 0ad	WEX180489	Disposing of waste exemption	On a farm	Deposit of agricultural waste consisting of plant tissue under a Plant Health notice
G	452m SW	Clements Reach Farm, Shipley Hills Road, Meopham, Gravesend, Da13 0ad	WEX021618	Disposing of waste exemption	On a farm	Deposit of agricultural waste consisting of plant tissue under a Plant Health notice
G	452m SW	Clements Reach Farm, Shipley Hills Road, Meopham, Gravesend, Da13 0ad	WEX021618	Disposing of waste exemption	On a farm	Burning waste in the open
G	452m SW	Clements Reach Farm, Shipley Hills Road, Meopham, Gravesend, Da13 0ad	WEX021618	Using waste exemption	On a farm	Spreading waste on agricultural land to confer benefit
G	452m SW	Clements Reach Farm, Shipley Hills Road, Meopham, Gravesend, Da13 0ad	WEX021618	Treating waste exemption	On a farm	Treatment of waste wood and waste plant matter by chipping, shredding, cutting or pulverising
G	452m SW	Clements Reach Farm, Shipley Hills Road, Meopham, Gravesend, Da13 0ad	WEX021618	Using waste exemption	On a farm	Use of waste in construction



ID	Location	Site	Reference	Category	Sub-Category	Description
G	452m SW	Clements Reach Farm Shipleigh Hills Road Gravesend Kent Da13 0ad	EPR/DE5487PT /A001	Treating waste exemption	Agricultural waste only	Treatment of waste wood and waste plant matter by chipping, shredding, cutting or pulverising
G	452m SW	Clements Reach Farm Shipleigh Hills Road Gravesend Kent Da13 0ad	EPR/DE5487PT /A001	Using waste exemption	Both agricultural and non- agricultural waste	Use of waste in construction
G	452m SW	Clements Reach Farm Shipleigh Hills Road Gravesend Kent Da13 0ad	EPR/DE5487PT /A001	Disposing of waste exemption	Agricultural waste only	Deposit of agricultural waste consisting of plant tissue under a Plant Health notice
G	452m SW	Clements Reach Farm Shipleigh Hills Road Gravesend Kent Da13 0ad	EPR/DE5487PT /A001	Disposing of waste exemption	Agricultural waste only	Burning waste in the open
G	452m SW	Clements Reach Farm Shipleigh Hills Road Gravesend Kent Da13 0ad	EPR/DE5487PT /A001	Using waste exemption	Both agricultural and non- agricultural waste	Spreading waste on agricultural land to confer benefit
F	453m SW	Clements Reach Farm Shipleigh Hills Road Gravesend Kent Da13 0ad	EPR/CH0978K E/A001	Disposing of waste exemption	Agricultural waste only	Deposit of waste from dredging of inland waters
F	453m SW	Clements Reach Farm Shipleigh Hills Road Gravesend Kent Da13 0ad	EPR/CH0978K E/A001	Storing waste exemption	Agricultural waste only	Storage of waste in secure containers
F	453m SW	Clements Reach Farm Shipleigh Hills Road Gravesend Kent Da13 0ad	EPR/CH0978K E/A001	Storing waste exemption	Agricultural waste only	Storage of waste in a secure place
F	453m SW	Clements Reach Farm Shipleigh Hills Road Gravesend Kent Da13 0ad	EPR/CH0978K E/A001	Treating waste exemption	Agricultural waste only	Cleaning, washing, spraying or coating relevant waste
F	453m SW	Clements Reach Farm Shipleigh Hills Road Gravesend Kent Da13 0ad	EPR/CH0978K E/A001	Treating waste exemption	Agricultural waste only	Preparatory treatments (baling, sorting, shredding etc)
F	453m SW	Clements Reach Farm Shipleigh Hills Road Gravesend Kent Da13 0ad	EPR/CH0978K E/A001	Treating waste exemption	Agricultural waste only	Treatment of waste wood and waste plant matter by chipping, shredding, cutting or pulverising
F	453m SW	Clements Reach Farm Shipleigh Hills Road Gravesend Kent Da13 0ad	EPR/CH0978K E/A001	Using waste exemption	Agricultural waste only	Use of waste in construction





ID	Location	Site	Reference	Category	Sub-Category	Description
F	453m SW	Clements Reach Farm Shipleigh Hills Road Gravesend Kent Da13 0ad	EPR/CH0978K E/A001	Using waste exemption	Agricultural waste only	Spreading of plant matter to confer benefit
F	453m SW	Clements Reach Farm Shipleigh Hills Road Gravesend Kent Da13 0ad	EPR/CH0978K E/A001	Using waste exemption	Agricultural waste only	Use of waste for a specified purpose
F	453m SW	Clements Reach Farm Shipleigh Hills Road Gravesend Kent Da13 0ad	EPR/CH0978K E/A001	Disposing of waste exemption	Agricultural waste only	Deposit of agricultural waste consisting of plant tissue under a Plant Health notice
F	453m SW	Clements Reach Farm Shipleigh Hills Road Gravesend Kent Da13 0ad	EPR/CH0978K E/A001	Disposing of waste exemption	Agricultural waste only	Burning waste in the open
F	453m SW	Clements Reach Farm Shipleigh Hills Road Gravesend Kent Da13 0ad	EPR/CH0978K E/A001	Using waste exemption	Agricultural waste only	Spreading waste on agricultural land to confer benefit
F	454m SW	-	WEX395408	Using waste exemption	On a farm	Use of waste in construction
2	490m S	-	WEX412200	Treating waste exemption	Not on a farm	Sorting and de-naturing of controlled drugs for disposal

*This data is sourced from the Environment Agency and Natural Resources Wales.*



## 4 Current industrial land use



- Site Outline
- Search buffers in metres (m)
- Recent industrial land uses
- △ Current or recent petrol stations
- Pollution Incidents (EA/NRW)

### 4.1 Recent industrial land uses

#### Records within 250m

9

Current potentially contaminative industrial sites.

Features are displayed on the Current industrial land use map on [page 34](#) >

ID	Location	Company	Address	Activity	Category
A	27m NW	Spaflow	The Parade, Wrotham Road, Meopham, Gravesend, Kent, DA13 0JL	Civil Engineers	Engineering Services
A	27m NW	Big M Car Service Centre	The Parade, Wrotham Road, Meopham, Gravesend, Kent, DA13 0JL	Vehicle Repair, Testing and Servicing	Repair and Servicing



ID	Location	Company	Address	Activity	Category
1	28m NW	Awqats Ltd	Holly House, Wrotham Road, Meopham, Gravesend, Kent, DA13 0RE	Cutting, Drilling and Welding Services	Construction Services
A	35m NW	Big M Motor Spares	1 The Parade, Wrotham Road, Meopham, Gravesend, Kent, DA13 0JL	Vehicle Repair, Testing and Servicing	Repair and Servicing
A	41m NW	Street Lights	Watmough House the Parade, Wrotham Road, Meopham, Gravesend, Kent, DA13 0JL	Construction Completion Services	Construction Services
2	44m N	Telephone Exchange	Kent, DA13	Telecommunications Features	Infrastructure and Facilities
3	73m N	Electricity Sub Station	Kent, DA13	Electrical Features	Infrastructure and Facilities
4	124m W	Electricity Sub Station	Kent, DA13	Electrical Features	Infrastructure and Facilities
7	182m N	H2o Valeting Services Ltd	30, Poplar Walk, Meopham, Gravesend, Kent, DA13 0EB	Vehicle Cleaning Services	Personal, Consumer and Other Services

*This data is sourced from Ordnance Survey.*

## 4.2 Current or recent petrol stations

**Records within 500m**

**1**

Open, closed, under development and obsolete petrol stations.

Features are displayed on the Current industrial land use map on [page 34 >](#)

ID	Location	Company	Address	LPG	Status
10	457m S	OBSOLETE	Wrotham Road, Meopham, Gravesend, Kent, DA13 0AG	Not Applicable	Obsolete

*This data is sourced from Experian.*

## 4.3 Electricity cables

**Records within 500m**

**0**

High voltage underground electricity transmission cables.

*This data is sourced from National Grid.*



## 4.4 Gas pipelines

Records within 500m

0

High pressure underground gas transmission pipelines.

*This data is sourced from National Grid.*

## 4.5 Sites determined as Contaminated Land

Records within 500m

0

Contaminated Land Register of sites designated under Part 2a of the Environmental Protection Act 1990.

*This data is sourced from Local Authority records.*

## 4.6 Control of Major Accident Hazards (COMAH)

Records within 500m

0

Control of Major Accident Hazards (COMAH) sites. This data includes upper and lower tier sites, and includes a historical archive of COMAH sites and Notification of Installations Handling Hazardous Substances (NIHHS) records.

*This data is sourced from the Health and Safety Executive.*

## 4.7 Regulated explosive sites

Records within 500m

0

Sites registered and licensed by the Health and Safety Executive under the Manufacture and Storage of Explosives Regulations 2005 (MSER). The last update to this data was in April 2011.

*This data is sourced from the Health and Safety Executive.*

## 4.8 Hazardous substance storage/usage

Records within 500m

0

Consents granted for a site to hold certain quantities of hazardous substances at or above defined limits in accordance with the Planning (Hazardous Substances) Regulations 2015.

*This data is sourced from Local Authority records.*



## 4.9 Historical licensed industrial activities (IPC)

Records within 500m

0

Integrated Pollution Control (IPC) records of substance releases to air, land and water. This data represents a historical archive as the IPC regime has been superseded.

*This data is sourced from the Environment Agency and Natural Resources Wales.*

## 4.10 Licensed industrial activities (Part A(1))

Records within 500m

0

Records of Part A(1) installations regulated under the Environmental Permitting (England and Wales) Regulations 2016 for the release of substances to the environment.

*This data is sourced from the Environment Agency and Natural Resources Wales.*

## 4.11 Licensed pollutant release (Part A(2)/B)

Records within 500m

0

Records of Part A(2) and Part B installations regulated under the Environmental Permitting (England and Wales) Regulations 2016 for the release of substances to the environment.

*This data is sourced from Local Authority records.*

## 4.12 Radioactive Substance Authorisations

Records within 500m

0

Records of the storage, use, accumulation and disposal of radioactive substances regulated under the Radioactive Substances Act 1993.

*This data is sourced from the Environment Agency and Natural Resources Wales.*

## 4.13 Licensed Discharges to controlled waters

Records within 500m

0

Discharges of treated or untreated effluent to controlled waters under the Water Resources Act 1991.

*This data is sourced from the Environment Agency and Natural Resources Wales.*

#### 4.14 Pollutant release to surface waters (Red List)

**Records within 500m****0**

Discharges of specified substances under the Environmental Protection (Prescribed Processes and Substances) Regulations 1991.

*This data is sourced from the Environment Agency and Natural Resources Wales.*

#### 4.15 Pollutant release to public sewer

**Records within 500m****0**

Discharges of Special Category Effluents to the public sewer.

*This data is sourced from the Environment Agency and Natural Resources Wales.*

#### 4.16 List 1 Dangerous Substances

**Records within 500m****0**

Discharges of substances identified on List I of European Directive E 2006/11/EC, and regulated under the Environmental Damage (Prevention and Remediation) Regulations 2015.

*This data is sourced from the Environment Agency and Natural Resources Wales.*

#### 4.17 List 2 Dangerous Substances

**Records within 500m****0**

Discharges of substances identified on List II of European Directive E 2006/11/EC, and regulated under the Environmental Damage (Prevention and Remediation) Regulations 2015.

*This data is sourced from the Environment Agency and Natural Resources Wales.*

#### 4.18 Pollution Incidents (EA/NRW)

**Records within 500m****6**

Records of substantiated pollution incidents. Since 2006 this data has only included category 1 (major) and 2 (significant) pollution incidents.

Features are displayed on the Current industrial land use map on [page 34 >](#)



ID	Location	Details	
5	150m N	Incident Date: 18/05/2002 Incident Identification: 79681 Pollutant: Atmospheric Pollutants and Effects Pollutant Description: Effects on Humans	Water Impact: Category 4 (No Impact) Land Impact: Category 4 (No Impact) Air Impact: Category 3 (Minor)
6	179m SW	Incident Date: 31/10/2001 Incident Identification: 40269 Pollutant: Inert Materials and Wastes Pollutant Description: Construction and Demolition Materials and Wastes	Water Impact: Category 4 (No Impact) Land Impact: Category 3 (Minor) Air Impact: Category 4 (No Impact)
B	246m W	Incident Date: 10/09/2002 Incident Identification: 106726 Pollutant: Atmospheric Pollutants and Effects Pollutant Description: Effects on Humans	Water Impact: Category 4 (No Impact) Land Impact: Category 4 (No Impact) Air Impact: Category 3 (Minor)
B	246m W	Incident Date: 10/09/2002 Incident Identification: 106726 Pollutant: Atmospheric Pollutants and Effects Pollutant Description: Effects on Humans	Water Impact: Category 4 (No Impact) Land Impact: Category 4 (No Impact) Air Impact: Category 3 (Minor)
8	276m E	Incident Date: 25/06/2002 Incident Identification: 87319 Pollutant: Other Pollutant Pollutant Description: Other	Water Impact: Category 4 (No Impact) Land Impact: Category 4 (No Impact) Air Impact: Category 3 (Minor)
9	399m W	Incident Date: 24/05/2002 Incident Identification: 80985 Pollutant: Atmospheric Pollutants and Effects Pollutant Description: Other Atmospheric Pollutant or Effect	Water Impact: Category 4 (No Impact) Land Impact: Category 3 (Minor) Air Impact: Category 2 (Significant)

*This data is sourced from the Environment Agency and Natural Resources Wales.*

## 4.19 Pollution inventory substances

<b>Records within 500m</b>	<b>0</b>
----------------------------	----------

The pollution inventory (substances) includes reporting on annual emissions of certain regulated substances to air, controlled waters and land. A reporting threshold for each substance is also included. Where emissions fall below the reporting threshold, no value will be given. The data is given for the most recent complete year available.

*This data is sourced from the Environment Agency and the Scottish Environment Protection Agency.*

## 4.20 Pollution inventory waste transfers

Records within 500m

0

The pollution inventory (waste transfers) includes reporting on annual transfers and recovery/disposal of controlled wastes from a site. A reporting threshold for each waste type is also included. Where releases fall below the reporting threshold, no value will be given. The data is given for the most recent complete year available.

*This data is sourced from the Environment Agency and the Scottish Environment Protection Agency.*

## 4.21 Pollution inventory radioactive waste

Records within 500m

0

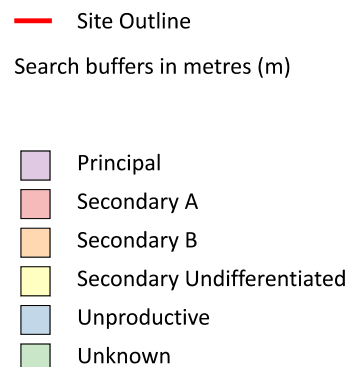
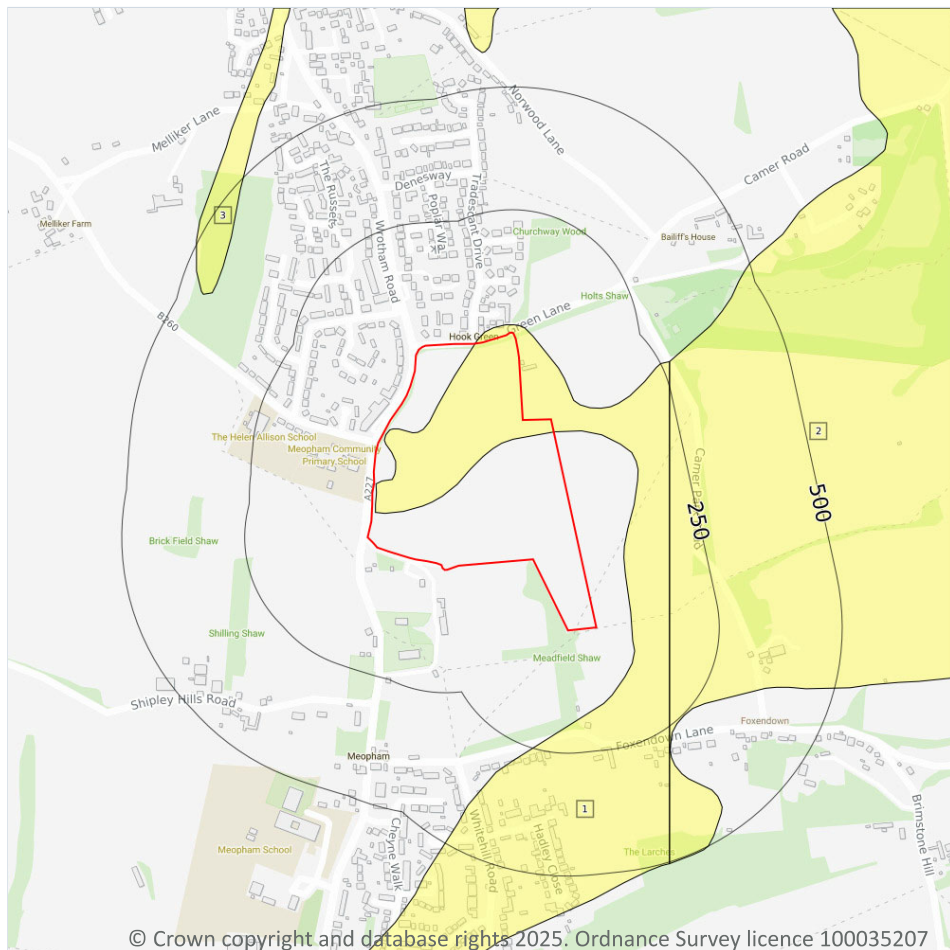
The pollution inventory (radioactive wastes) includes reporting on annual releases of radioactive substances from a site, including the means of release. Where releases fall below the reporting threshold, no value will be given. The data is given for the most recent complete year available.

*This data is sourced from the Environment Agency and the Scottish Environment Protection Agency.*





## 5 Hydrogeology - Superficial aquifer



### 5.1 Superficial aquifer

Records within 500m

3

Aquifer status of groundwater held within superficial geology.

Features are displayed on the Hydrogeology map on [page 41](#) >

ID	Location	Designation	Description
1	On site	Secondary Undifferentiated	Assigned where it is not possible to attribute either category A or B to a rock type. In general these layers have previously been designated as both minor and non-aquifer in different locations due to the variable characteristics of the rock type
2	149m SE	Secondary Undifferentiated	Assigned where it is not possible to attribute either category A or B to a rock type. In general these layers have previously been designated as both minor and non-aquifer in different locations due to the variable characteristics of the rock type

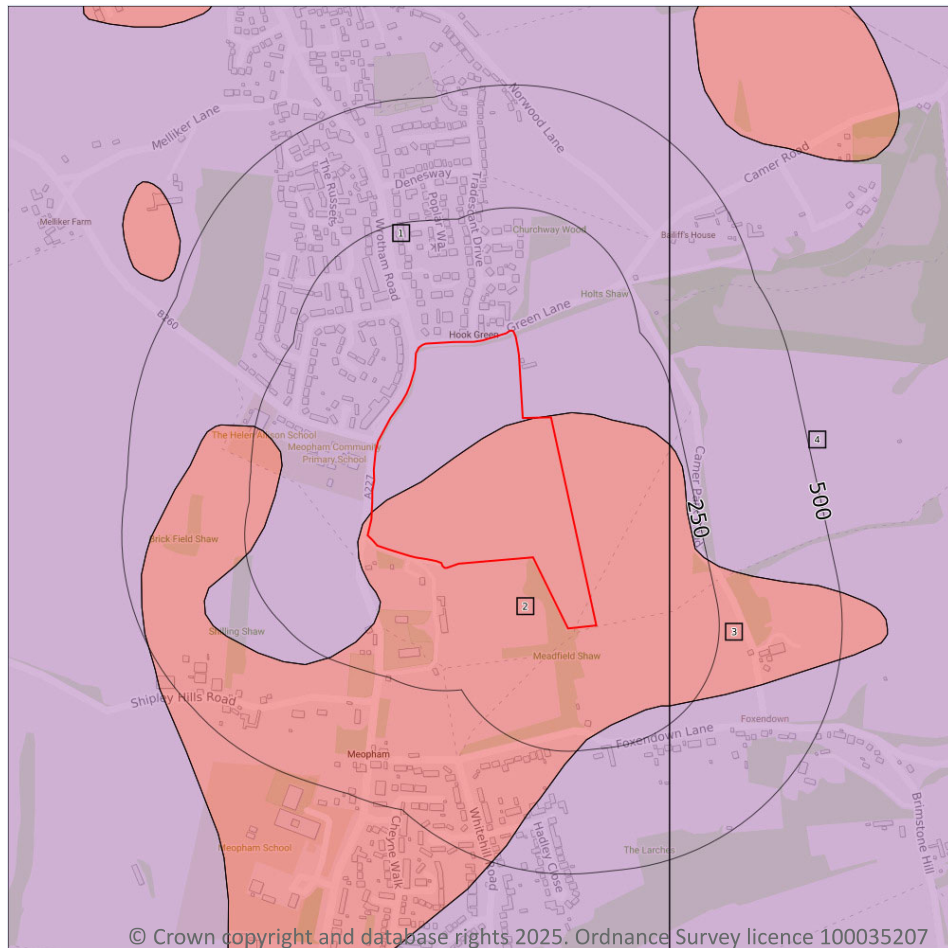


ID	Location	Designation	Description
3	430m NW	Secondary Undifferentiated	Assigned where it is not possible to attribute either category A or B to a rock type. In general these layers have previously been designated as both minor and non-aquifer in different locations due to the variable characteristics of the rock type

*This data is sourced from the British Geological Survey, the Environment Agency and Natural Resources Wales.*



## Bedrock aquifer



- Site Outline
- Search buffers in metres (m)
- Principal
- Secondary A
- Secondary B
- Secondary Undifferentiated
- Unproductive

### 5.2 Bedrock aquifer

Records within 500m

4

Aquifer status of groundwater held within bedrock geology.

Features are displayed on the Bedrock aquifer map on [page 43 >](#)

ID	Location	Designation	Description
1	On site	Principal	Geology of high intergranular and/or fracture permeability, usually providing a high level of water storage and may support water supply/river base flow on a strategic scale. Generally principal aquifers were previously major aquifers
2	On site	Secondary A	Permeable layers capable of supporting water supplies at a local rather than strategic scale, and in some cases forming an important source of base flow to rivers. These are generally aquifers formerly classified as minor aquifers

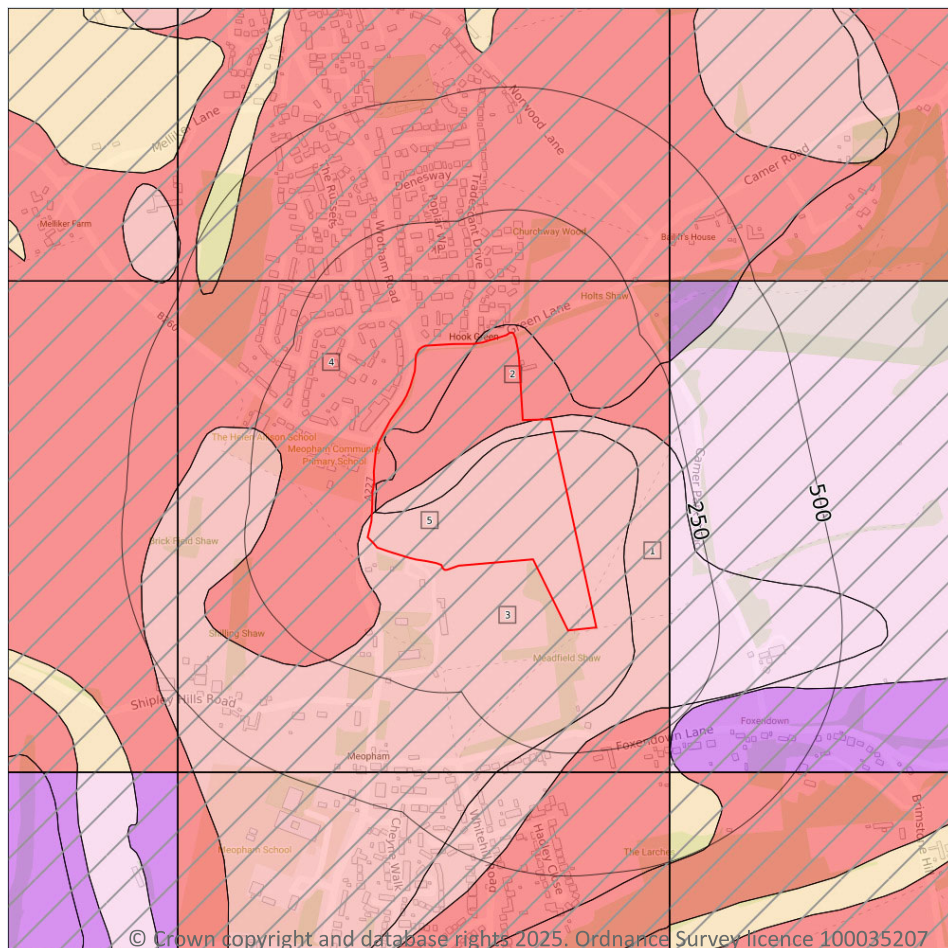


ID	Location	Designation	Description
3	149m SE	Secondary A	Permeable layers capable of supporting water supplies at a local rather than strategic scale, and in some cases forming an important source of base flow to rivers. These are generally aquifers formerly classified as minor aquifers
4	221m SE	Principal	Geology of high intergranular and/or fracture permeability, usually providing a high level of water storage and may support water supply/river base flow on a strategic scale. Generally principal aquifers were previously major aquifers

*This data is sourced from the British Geological Survey, the Environment Agency and Natural Resources Wales.*



## Groundwater vulnerability



— Site Outline

Search buffers in metres (m)

Superficial vulnerability

- Principal superficial aquifer, high vulnerability
- Secondary superficial aquifer, high vulnerability
- Principal superficial aquifer, medium vulnerability
- Secondary superficial aquifer, medium vulnerability
- Principal superficial aquifer, low vulnerability
- Secondary superficial aquifer, low vulnerability

Bedrock vulnerability

- Principal bedrock aquifer, high vulnerability
- Secondary bedrock aquifer, high vulnerability
- Principal bedrock aquifer, medium vulnerability
- Secondary bedrock aquifer, medium vulnerability
- Principal bedrock aquifer, low vulnerability
- Secondary bedrock aquifer, low vulnerability

Other information

- Unproductive aquifer
- Soluble rock risk
- Local information

### 5.3 Groundwater vulnerability

Records within 50m

4

An assessment of the vulnerability of groundwater to a pollutant discharged at ground level based on the hydrological, geological, hydrogeological and soil properties within a one kilometre square grid. Groundwater vulnerability is described as High, Medium or Low as follows:

- High - Areas able to easily transmit pollution to groundwater. They are likely to be characterised by high leaching soils and the absence of low permeability superficial deposits.
- Medium - Intermediate between high and low vulnerability.
- Low - Areas that provide the greatest protection from pollution. They are likely to be characterised by low leaching soils and/or the presence of superficial deposits characterised by a low permeability.

Features are displayed on the Groundwater vulnerability map on [page 45](#) >





ID	Location	Summary	Soil / surface	Superficial geology	Bedrock geology
1	On site	Summary Classification: Secondary bedrock aquifer - High Vulnerability Combined classification: Productive Bedrock Aquifer, Productive Superficial Aquifer	Leaching class: Intermediate Infiltration value: 40- 70% Dilution value: <300mm/year	Vulnerability: Medium Aquifer type: Secondary Thickness: <3m Patchiness value: <90% Recharge potential: Low	Vulnerability: High Aquifer type: Secondary Flow mechanism: Well connected fractures
2	On site	Summary Classification: Principal bedrock aquifer - High Vulnerability Combined classification: Productive Bedrock Aquifer, Productive Superficial Aquifer	Leaching class: Intermediate Infiltration value: 40- 70% Dilution value: <300mm/year	Vulnerability: Medium Aquifer type: Secondary Thickness: <3m Patchiness value: <90% Recharge potential: Low	Vulnerability: High Aquifer type: Principal Flow mechanism: Well connected fractures
3	On site	Summary Classification: Secondary bedrock aquifer - High Vulnerability Combined classification: Productive Bedrock Aquifer, No Superficial Aquifer	Leaching class: Intermediate Infiltration value: 40- 70% Dilution value: <300mm/year	Vulnerability: - Aquifer type: - Thickness: <3m Patchiness value: <90% Recharge potential: Low	Vulnerability: High Aquifer type: Secondary Flow mechanism: Well connected fractures
4	On site	Summary Classification: Principal bedrock aquifer - High Vulnerability Combined classification: Productive Bedrock Aquifer, No Superficial Aquifer	Leaching class: Intermediate Infiltration value: 40- 70% Dilution value: <300mm/year	Vulnerability: - Aquifer type: - Thickness: <3m Patchiness value: <90% Recharge potential: Low	Vulnerability: High Aquifer type: Principal Flow mechanism: Well connected fractures

*This data is sourced from the British Geological Survey, the Environment Agency and Natural Resources Wales.*

## 5.4 Groundwater vulnerability- soluble rock risk

### Records on site

1

This dataset identifies areas where solution features that enable rapid movement of a pollutant may be present within a 1km grid square.

ID	Maximum soluble risk category	Percentage of grid square covered by maximum risk
5	Very significant soluble rocks are likely to be present with a high possibility of localised subsidence or dissolution-related degradation of bedrock occurring naturally, especially in adverse conditions such as concentrated surface or subsurface water flow.	7.000000000000001%

*This data is sourced from the British Geological Survey and the Environment Agency.*



## 5.5 Groundwater vulnerability- local information

### Records on site

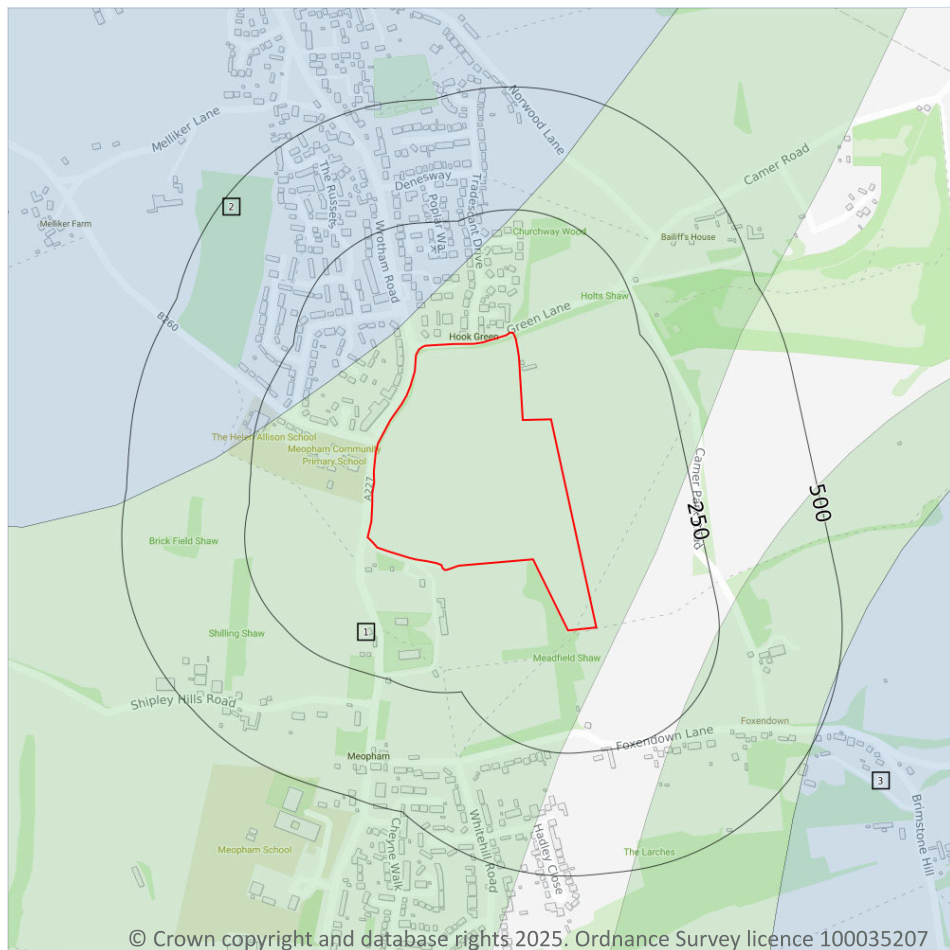
**0**

This dataset identifies areas where additional local information affecting vulnerability is held by the Environment Agency. Further information can be obtained by contacting the Environment Agency local Area groundwater team through the Environment Agency National Customer Call Centre on 03798 506 506 or by email on [enquiries@environment-agency.gov.uk](mailto:enquiries@environment-agency.gov.uk) ↗.

*This data is sourced from the British Geological Survey and the Environment Agency.*



## Abstractions and Source Protection Zones



- Site Outline
- Search buffers in metres (m)**
- Source Protection Zone 1  
Inner catchment
- Source Protection Zone 2  
Outer catchment
- Source Protection Zone 3  
Total catchment
- Source Protection Zone 4  
Zone of Special Interest
- Source Protection Zone 1c  
Inner catchment - confined aquifer
- Source Protection Zone 2c  
Outer catchment - confined aquifer
- Source Protection Zone 3c  
Total catchment - confined aquifer
- Drinking water abstraction licences  
Polygon features
- Drinking water abstraction licences  
Linear features
- Groundwater abstraction licence (point)
- Groundwater abstraction licence (area)
- Groundwater abstraction licence (linear)
- Surface Water Abstractions (point)
- Surface Water Abstractions (area)
- Surface Water Abstractions (linear)

### 5.6 Groundwater abstractions

#### Records within 2000m

2

Licensed groundwater abstractions for sites extracting more than 20 cubic metres of water a day and includes active and historical records. The data may be for a single abstraction point, between two points (line data) or a larger area.

Features are displayed on the Abstractions and Source Protection Zones map on [page 48 >](#)





ID	Location	Details	
-	1226m E	Status: Active Licence No: 9/40/01/0511/G Details: Potable Water Supply - Direct Direct Source: Southern Region Groundwater Point: CHALK BOREHOLES, WELLS AND ADITS AT LUDDLESDOWN PS Data Type: Poly4 Name: Southern Water Services Ltd Easting: 566300 Northing: 166250	Annual Volume (m <sup>3</sup> ): 17700000 Max Daily Volume (m <sup>3</sup> ): 92000 Original Application No: 169/0639D Original Start Date: 24/03/1986 Expiry Date: - Issue No: 100 Version Start Date: 27/11/2006 Version End Date: -
-	1226m E	Status: Active Licence No: 9/40/01/0511/G Details: Potable Water Supply - Direct Direct Source: Southern Region Groundwater Point: LOWER GREENSAND BOREHOLES, WELLS AND ADITS AT LUDDLESDOWN PS Data Type: Poly4 Name: Southern Water Services Ltd Easting: 566300 Northing: 166250	Annual Volume (m <sup>3</sup> ): 17700000 Max Daily Volume (m <sup>3</sup> ): 92000 Original Application No: 169/0639D Original Start Date: 24/03/1986 Expiry Date: - Issue No: 100 Version Start Date: 27/11/2006 Version End Date: -

*This data is sourced from the Environment Agency and Natural Resources Wales.*

## 5.7 Surface water abstractions

### Records within 2000m

0

Licensed surface water abstractions for sites extracting more than 20 cubic metres of water a day and includes active and historical records. The data may be for a single abstraction point, a stretch of watercourse or a larger area.

*This data is sourced from the Environment Agency and Natural Resources Wales.*

## 5.8 Potable abstractions

### Records within 2000m

2

Licensed potable water abstractions for sites extracting more than 20 cubic metres of water a day and includes active and historical records. The data may be for a single abstraction point, a stretch of watercourse or a larger area.

Features are displayed on the Abstractions and Source Protection Zones map on [page 48](#) >



ID	Location	Details	
-	1226m E	Status: Active Licence No: 9/40/01/0511/G Details: Potable Water Supply - Direct Direct Source: Southern Region Groundwater Point: CHALK BOREHOLES, WELLS AND ADITS AT LUDDLESDOWN PS Data Type: Poly4 Name: Southern Water Services Ltd Easting: 566300 Northing: 166250	Annual Volume (m <sup>3</sup> ): 17700000 Max Daily Volume (m <sup>3</sup> ): 92000 Original Application No: 169/0639D Original Start Date: 24/03/1986 Expiry Date: - Issue No: 100 Version Start Date: 27/11/2006 Version End Date: -
-	1226m E	Status: Active Licence No: 9/40/01/0511/G Details: Potable Water Supply - Direct Direct Source: Southern Region Groundwater Point: LOWER GREENSAND BOREHOLES, WELLS AND ADITS AT LUDDLESDOWN PS Data Type: Poly4 Name: Southern Water Services Ltd Easting: 566300 Northing: 166250	Annual Volume (m <sup>3</sup> ): 17700000 Max Daily Volume (m <sup>3</sup> ): 92000 Original Application No: 169/0639D Original Start Date: 24/03/1986 Expiry Date: - Issue No: 100 Version Start Date: 27/11/2006 Version End Date: -

*This data is sourced from the Environment Agency and Natural Resources Wales.*

## 5.9 Source Protection Zones

<b>Records within 500m</b>	<b>3</b>
----------------------------	----------

Source Protection Zones define the sensitivity of an area around a potable abstraction site to contamination.

Features are displayed on the Abstractions and Source Protection Zones map on [page 48 >](#)

ID	Location	Type	Description
<b>1</b>	<b>On site</b>	<b>3</b>	<b>Total catchment</b>
2	60m NW	2	Outer catchment
3	491m SE	2	Outer catchment

*This data is sourced from the Environment Agency and Natural Resources Wales.*



## 5.10 Source Protection Zones (confined aquifer)

Records within 500m

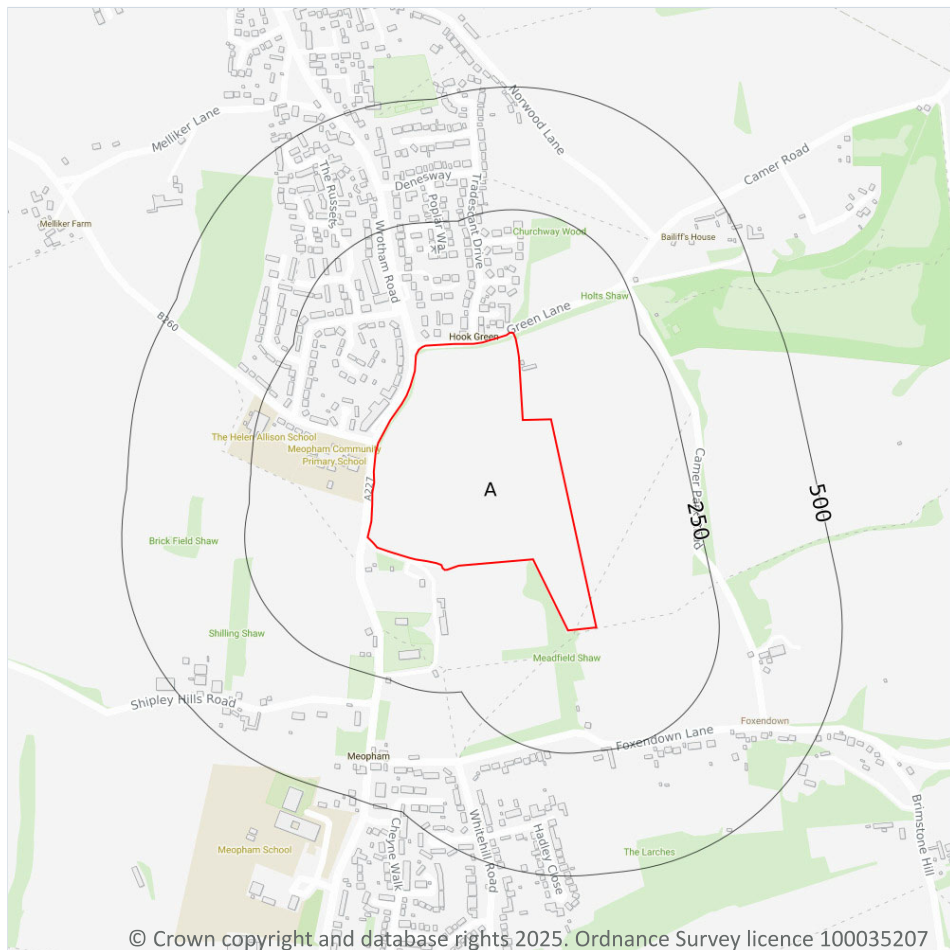
0

Source Protection Zones in the confined aquifer define the sensitivity around a deep groundwater abstraction to contamination. A confined aquifer would normally be protected from contamination by overlying geology and is only considered a sensitive resource if deep excavation/drilling is taking place.

*This data is sourced from the Environment Agency and Natural Resources Wales.*



## 6 Hydrology



- Site Outline
- Search buffers in metres (m)
- Water Network (OS MasterMap)
- Surface water features (wider than 5m)
- Surface water features (narrower than 5m)
- ⋯ WFD River, canal and surface water transfer water bodies
- WFD Lake water bodies
- WFD Transitional and coastal water bodies
- WFD Surface water body catchments boundaries
- WFD Groundwater body boundaries

### 6.1 Water Network (OS MasterMap)

Records within 250m

0

Detailed water network of Great Britain showing the flow and precise central course of every river, stream, lake and canal.

*This data is sourced from the Ordnance Survey.*

### 6.2 Surface water features

Records within 250m

0

Covering rivers, streams and lakes (some overlap with OS MasterMap Water Network data in previous section) but additionally covers smaller features such as ponds. Rivers and streams narrower than 5m are represented as a single line. Lakes, ponds and rivers or streams wider than 5m are represented as polygons.



This data is sourced from the Ordnance Survey.

## 6.3 WFD Surface water body catchments

### Records on site

**1**

The Water Framework Directive is an EU-led framework for the protection of inland surface waters, estuaries, coastal waters and groundwater through river basin-level management planning. In terms of surface water, these basins are broken down into smaller units known as management, operational and water body catchments.

Features are displayed on the Hydrology map on [page 52](#) >

ID	Location	Type	Water body catchment	Water body ID	Operational catchment	Management catchment
A	On site	Coastal Catchment	Not part of a river WB catchment	130	Lower Medway	Medway

This data is sourced from the Environment Agency and Natural Resources Wales.

## 6.4 WFD Surface water bodies

### Records identified

**0**

Surface water bodies under the Directive may be rivers, lakes, estuary or coastal. To achieve the purpose of the Directive, environmental objectives have been set and are reported on for each water body. The progress towards delivery of the objectives is then reported on by the relevant competent authorities at the end of each six-year cycle. The river water body directly associated with the catchment listed in the previous section is detailed below, along with any lake, canal, coastal or artificial water body within 250m of the site. Click on the water body ID in the table to visit the EA Catchment Explorer to find out more about each water body listed.

This data is sourced from the Environment Agency and Natural Resources Wales.

## 6.5 WFD Groundwater bodies

### Records on site

**1**

Groundwater bodies are also covered by the Directive and the same regime of objectives and reporting detailed in the previous section is in place. Click on the water body ID in the table to visit the EA Catchment Explorer to find out more about each groundwater body listed.

Features are displayed on the Hydrology map on [page 52](#) >

ID	Location	Name	Water body ID	Overall rating	Chemical rating	Quantitative	Year
A	On site	North Kent Medway Chalk	<a href="#">GB40601G500300</a> ↗	Poor	Poor	Poor	2019



*This data is sourced from the Environment Agency and Natural Resources Wales.*





## 7 River and coastal flooding

### 7.1 Risk of flooding from rivers and the sea

**Records within 50m****0**

The chance of flooding from rivers and/or the sea in any given year, based on cells of 50m within the Risk of Flooding from Rivers and Sea (RoFRaS)/Flood Risk Assessment Wales (FRAW) models. Each cell is allocated one of four flood risk categories, taking into account flood defences and their condition. The risk categories for RoFRaS for rivers and the sea and FRAW for rivers are; Very low (less than 1 in 1000 chance in any given year), Low (less than 1 in 100 but greater than or equal to 1 in 1000 chance), Medium (less than 1 in 30 but greater than or equal to 1 in 100 chance) or High (greater than or equal to 1 in 30 chance). The risk categories for FRAW for the sea are; Very low (less than 1 in 1000 chance in any given year), Low (less than 1 in 200 but greater than or equal to 1 in 1000 chance), Medium (less than 1 in 30 but greater than or equal to 1 in 200 chance) or High (greater than or equal to 1 in 30 chance).

*This data is sourced from the Environment Agency and Natural Resources Wales.*

### 7.2 Historical Flood Events

**Records within 250m****0**

Records of historic flooding from rivers, the sea, groundwater and surface water. Records began in 1946 when predecessor bodies started collecting detailed information about flooding incidents, although limited details may be included on flooding incidents prior to this date. Takes into account the presence of defences, structures, and other infrastructure where they existed at the time of flooding, and includes flood extents that may have been affected by overtopping, breaches or blockages.

*This data is sourced from the Environment Agency and Natural Resources Wales.*

### 7.3 Flood Defences

**Records within 250m****0**

Records of flood defences owned, managed or inspected by the Environment Agency and Natural Resources Wales. Flood defences can be structures, buildings or parts of buildings. Typically these are earth banks, stone and concrete walls, or sheet-piling that is used to prevent or control the extent of flooding.

*This data is sourced from the Environment Agency and Natural Resources Wales.*

