

Proposed Residential Development at Blackthorne Farm, Culverstone Green

The proposed development will comprise a mix of up to 100 residential dwellings, to include affordable homes.

CONSTRUCTION PHASE

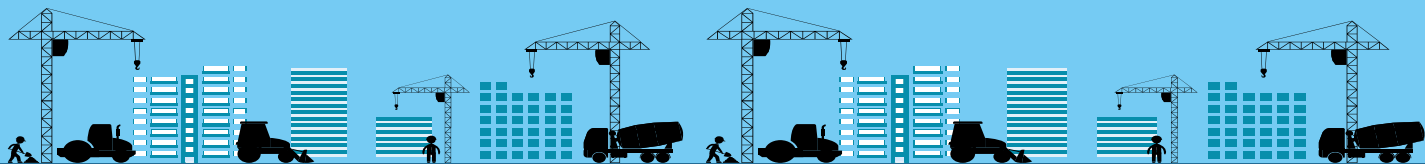
(Associated with delivery of the development over an 30 month construction period)

**56 FTE
Local Jobs**

**100 FTE
Regional/ UK Jobs**

**£8.7m
Local Economic Output
Over Construction Period**

**£15.6m
Total Economic Output
Over Construction Period**



OPERATIONAL PHASE

117 people

**New resident population in
employment**

£2.6m per annum

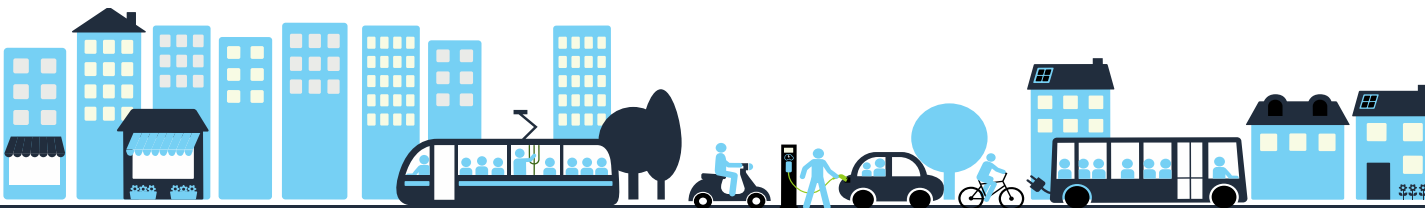
**Local Economic Output
of New Residents**

£1.5m per annum

**Residents Expenditure on Local
Retail and Services**

£8.0m per annum

**Total Economic Output
of New Residents**



LOCAL AUTHORITY REVENUE

**£236,000 per annum
Council Tax**

**£214,000 single payment
New Homes Bonus**

