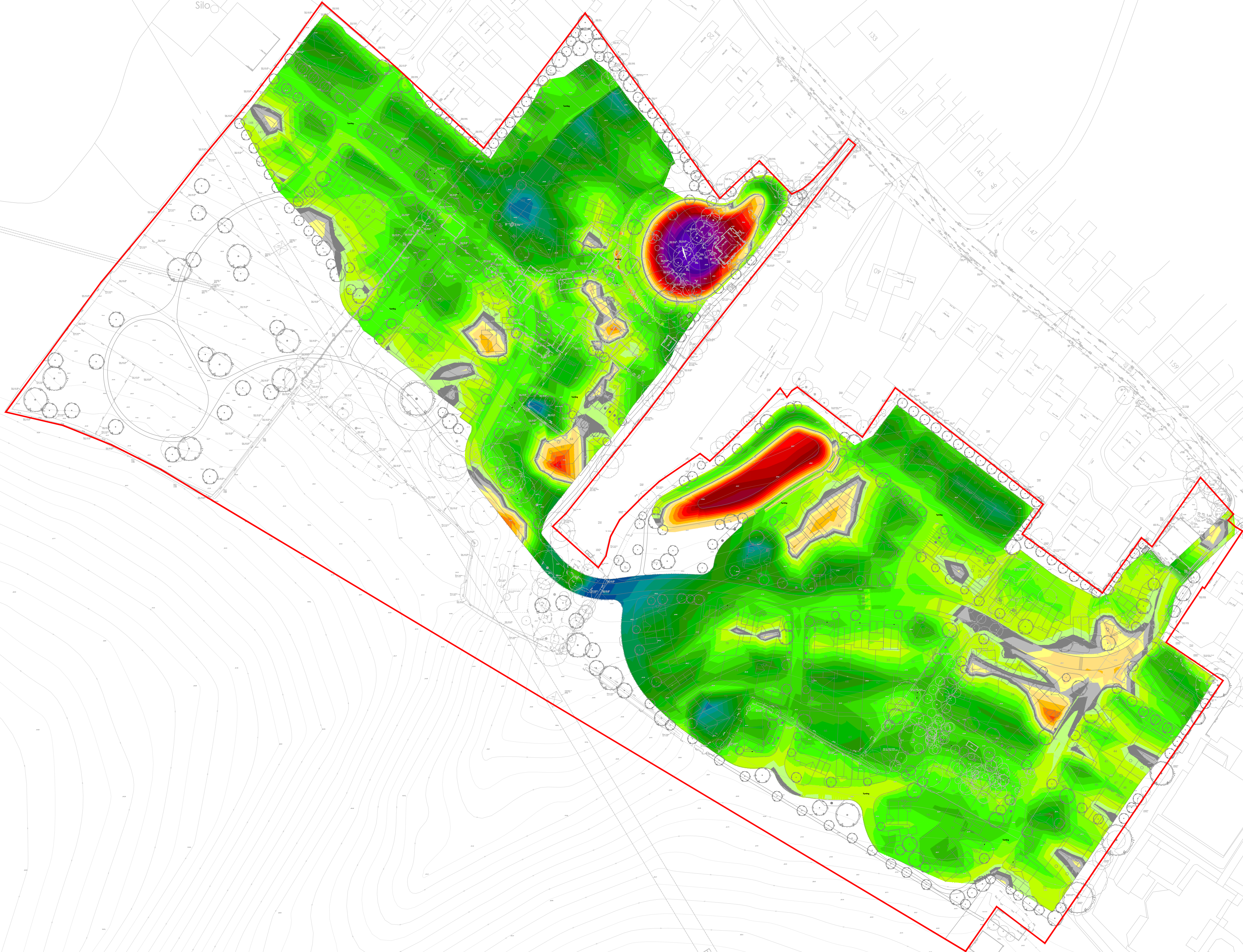


Willerby Farm



| ELEVATION DATA |                    |                    |        |
|----------------|--------------------|--------------------|--------|
| No.            | MIN. ELEVATION (m) | MAX. ELEVATION (m) | COLOUR |
| 1              | -4.00              | -3.50              |        |
| 2              | -3.50              | -3.00              |        |
| 3              | -3.00              | -2.60              |        |
| 4              | -2.60              | -2.40              |        |
| 5              | -2.40              | -2.20              |        |
| 6              | -2.20              | -2.00              |        |
| 7              | -2.00              | -1.80              |        |
| 8              | -1.80              | -1.60              |        |
| 9              | -1.60              | -1.40              |        |
| 10             | -1.40              | -1.20              |        |
| 11             | -1.20              | -1.00              |        |
| 12             | -1.00              | -0.80              |        |
| 13             | -0.80              | -0.60              |        |
| 14             | -0.60              | -0.40              |        |
| 15             | -0.40              | -0.20              |        |
| 16             | -0.20              | -0.10              |        |
| 17             | -0.10              | 0.00               |        |
| 18             | 0.00               | 0.10               |        |
| 19             | 0.10               | 0.20               |        |
| 20             | 0.20               | 0.40               |        |
| 21             | 0.40               | 0.60               |        |
| 22             | 0.60               | 0.80               |        |
| 23             | 0.80               | 1.00               |        |
| 24             | 1.00               | 1.20               |        |
| 25             | 1.20               | 1.40               |        |
| 26             | 1.40               | 1.60               |        |
| 27             | 1.60               | 1.80               |        |
| 28             | 1.80               | 2.00               |        |
| 29             | 2.00               | 2.20               |        |
| 30             | 2.20               | 2.40               |        |
| 31             | 2.40               | 2.60               |        |
| 32             | 2.60               | 3.00               |        |
| 33             | 3.00               | 3.50               |        |
| 34             | 3.50               | 4.00               |        |

- NOTES:
- THIS DRAWING IS TO BE READ IN CONJUNCTION WITH THE RELEVANT SPECIFICATION, INC. RISK ASSESSMENTS AND ALL OTHER RELATED DRAWINGS ISSUED BY THE ENGINEER.
  - DO NOT SCALE FROM THIS DRAWING. WORK FROM FIGURED DIMENSIONS ONLY.
  - ALL DIMENSIONS SHOWN ON THIS DRAWING ARE IN METRES UNLESS OTHERWISE STATED.
  - ALL DIMENSIONS, LEVELS AND SURVEY GRID CO-ORDINATES ARE TO BE CHECKED ON SITE AND THE ENGINEER NOTIFIED IMMEDIATELY OF ANY DISCREPANCIES PRIOR TO THE COMMENCEMENT OF THE WORKS.
  - NO DEVIATION FROM THE DETAILS SHOWN ON THIS DRAWING IS PERMITTED WITHOUT PRIOR PERMISSION FROM THE ENGINEER.
  - ANY WORKS OUTSIDE RED SITE BOUNDARY ARE FOR INFORMATION PURPOSES ONLY. UNLESS SPECIFICALLY NOTED, ALL WORKS OUTSIDE THE SITE BOUNDARY WILL BE UNDERTAKEN BY OTHERS UNDER A SEPARATE CONTRACT.

CUT AND FILL SUMMARY

BELOW VALUES ARE BASED ON INITIAL ESTIMATIONS ONLY AND SHOULD NOT BE USED FOR TENDER/ CONSTRUCTION INFORMATION TAKE-OFFS. ALL CONTRACTORS ARE TO MAKE THEIR OWN ASSESSMENT OF THE SITE.

NO ACCOUNT HAD BEEN MADE FOR BULKAGE. ANALYSIS ASSUMES SITE WON MATERIAL MAY BE REUSED AS GENERAL FILL MATERIAL. THIS IS TO BE VERIFIED BY GEOTECHNICAL ENGINEER.

TOPSOIL STRIP

DEVELOPMENT AREA: 58,974m<sup>2</sup>  
TOPSOIL DEPTH\*: 250mm  
TOPSOIL STRIP VOLUME: 14,743m<sup>3</sup>  
TOPSOIL TO BE RE-USED: 9,447m<sup>3</sup>

\*NO SITE INVESTIGATION HAS BEEN PROVIDED THEREFORE A TOPSOIL DEPTH OF 250mm HAS BEEN ASSUMED.

ARISINGS FROM PERMANENT WORKS<sup>a</sup>

|                          |                              |                     |
|--------------------------|------------------------------|---------------------|
| HIGHWAYS:                | 10,076m <sup>2</sup> @ 890mm | 8,968m <sup>3</sup> |
| DRIVEWAYS:               | 4,669m <sup>2</sup> @ 435 mm | 2,031m <sup>3</sup> |
| FOOTWAYS:                | 1,009m <sup>2</sup> @ 270 mm | 488m <sup>3</sup>   |
| HOUSES:                  | 154 @ 60m <sup>3</sup> /UNIT | 9,180m <sup>3</sup> |
| GARAGES:                 | 44 @ 20m <sup>3</sup> /UNIT  | 880m <sup>3</sup>   |
| SOFT LANDSCAPING/ PATHS: | 31,489m <sup>2</sup> @ 300mm | 9,447m <sup>3</sup> |

TOTAL: 30,994m<sup>3</sup>

<sup>a</sup>ASSUMED CBR OF 2.5%

SUBSOIL ANALYSIS

|                            |                     |   |
|----------------------------|---------------------|---|
| TOPSOIL STRIP TO PROPOSED: | CUT                 | FILL  |
| ARISINGS:                  | 5,240m <sup>3</sup> | 43,770m <sup>3</sup><br>(30,994m <sup>3</sup> ) |

TOTAL 5,240m<sup>3</sup> 12,776m<sup>3</sup>

TOTAL EXPORT OFF SITE: 7,536m<sup>3</sup>

ARISINGS ASSUMPTIONS:

890mm FOR ROADS (KENT CC "MIR" DETAIL)  
270mm FOR FOOTWAYS  
DRIVEWAYS BASED ON ASSUMED DEPTH OF 435mm (NHBC).  
HOUSES BASED ON 60m<sup>3</sup> PER PLOT.  
SOFT LANDSCAPING BASED ON A DEPTH OF 300mm

|     |               |     |     |     |          |
|-----|---------------|-----|-----|-----|----------|
| P1  | INITIAL ISSUE | JSH | AMC | AD  | 18.11.25 |
| Rev | Description   | Drn | Chk | App | Date     |

|             |                  |
|-------------|------------------|
| Purpose:    | NOT YET APPROVED |
| PRELIMINARY | NOT YET APPROVED |

**ARDENT** CONSULTING ENGINEERS  
AN EMPLOYEE OWNED COMPANY

Third Floor  
The Hallmark Building  
52-56 Leadenhall Street  
London  
EC3M 5JE  
Tel: 020 7680 4088  
Web: [www.ardent-ce.co.uk](http://www.ardent-ce.co.uk)  
E-mail: [enquiries@ardent-ce.co.uk](mailto:enquiries@ardent-ce.co.uk)

**worksafe**  
consultant  
[www.ardentce.com](http://www.ardentce.com)

**SSIP**  
SAFETY  
SCHEDULED  
INDUSTRY  
PRACTICE

**ISO 9001**  
BUREAU VERITAS  
CERTIFICATION

Client

ESQUIRE DEVELOPMENTS

Project Title:

ROSE FARM, ISTEAD RISE

Drawing Title:

CUT AND FILL ANALYSIS

|          |            |             |          |
|----------|------------|-------------|----------|
| Drawn by | Checked by | Approved by | Revision |
| JSH      | AMC        | AD          | P1       |

A1 Scale 1:1000@A1 Date 18.11.25

Drawing Number 2500920-ACE-XX-XX-DR-C-0601

