

Proposed Residential Development on land at Downs Road, Istead Rise

The proposed development will comprise a mix of 154 residential dwellings, (including affordable housing), with all matters reserved except of access.

CONSTRUCTION PHASE

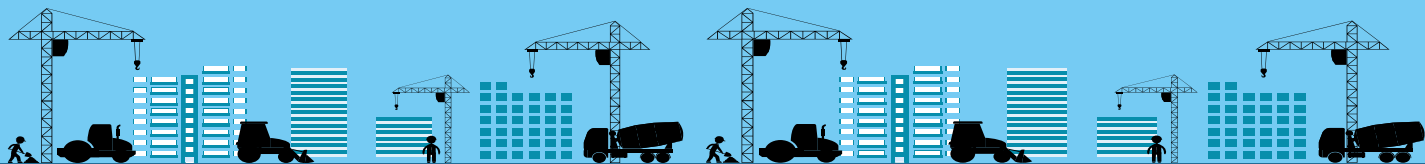
(Associated with delivery of the development over a 4 year construction period)

62 FTE
Local Jobs

111 FTE
Regional/ UK Jobs

£16m
Local Economic Output
Over Construction Period

£28m
Total Economic Output
Over Construction Period



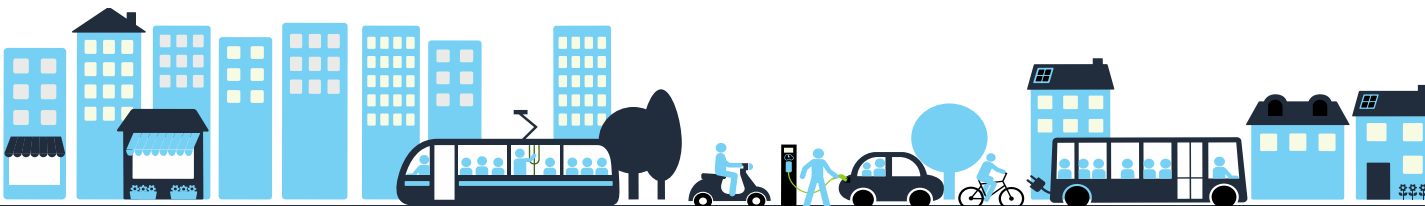
OPERATIONAL PHASE

190 people
New resident population in
employment

£4.3m per annum
Local Economic Output
of New Residents

£2.5m per annum
Residents Expenditure on Local
Retail and Services

£13.0m per annum
Total Economic Output
of New Residents



LOCAL AUTHORITY REVENUE

£353,000 per annum
Council Tax

£330,000 single payment
New Homes Bonus

